

Localizing Intellicus

Intellicus Enterprise Reporting and BI Platform



©Intellicus Technologies
info@intellicus.com
www.intellicus.com

Copyright © **2014** Intellicus Technologies

This document and its content is copyrighted material of Intellicus Technologies. The content may not be copied or derived from, through any means, in parts or in whole, without a prior written permission from Intellicus Technologies. All other product names are believed to be registered trademarks of the respective companies.

Dated: November 2014

Acknowledgements

Intellicus acknowledges using of third-party libraries to extend support to the functionalities that they provide.

For details, visit: <http://www.intellicus.com/acknowledgements.htm>

Contents

Localizing Intellicus	1
Scope of localization.....	1
Locale selection	1
Time zones for report server, database and user	2
Portal	3
Report data	4
What will continue to appear in English.....	5
Report Server and 3 rd party messages	5
Property values.....	5
Numeric values	6
Customizing locale dependent items	7
Configuring Intellicus Portal	9
Configuring Locales appearing on Intellicus Portal.....	9
Running Intellicus Portal in UTF-8 mode.....	10
Running Intellicus Report Server in UTF-8 mode	11
Pre-configured items on Portal.....	12
Language Bundle file on Portal	13
Points to remember while creating a language bundle file	16
Configuring Intellicus Server.....	17
Language Bundle file on Report Server.....	17
Setting value of Report Server Property "Text Output Encoding"	19
Report output localization	20
Appendix.....	22
How to apply a bundle file.....	22
How to change a value in a bundle file	23

Localizing Intellicus

Software's acceptability increases multiple times when it can be localized to cater to its users spread across geographical locations.

By using localization facilities of Intellicus, users can get information like date, time and currency in their localized formats, date and time as per their time zones and if configured, access Intellicus portal as well as get report outputs in language supported by corresponding locale.

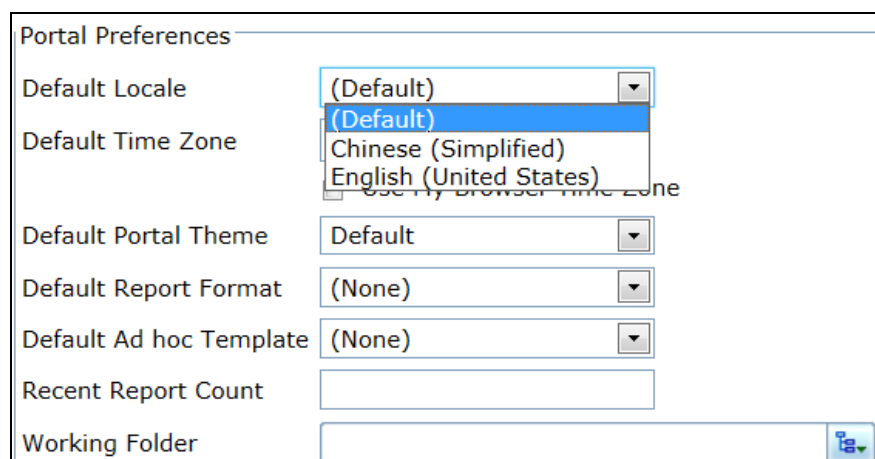
Scope of localization

Localization can be applied on:

- Locale to select date and time formats
- Time zones for report server, database and user
- Portal
- Report data

Locale selection

Locale identifies a specific language and geographic region. In Intellicus, locales affect portal language (if configured), sorting, date/time formats, number and currency formats.



The screenshot shows the 'Portal Preferences' dialog box. It contains several settings:

- Default Locale:** A dropdown menu currently showing '(Default)'. A list is open below it showing '(Default)', 'Chinese (Simplified)', and 'English (United States)'. There is a checkbox labeled 'Use my browser time zone' next to the list.
- Default Time Zone:** A dropdown menu currently showing '(Default)'.
- Default Portal Theme:** A dropdown menu currently showing 'Default'.
- Default Report Format:** A dropdown menu currently showing '(None)'.
- Default Ad hoc Template:** A dropdown menu currently showing '(None)'.
- Recent Report Count:** A text input field.
- Working Folder:** A text input field with a folder icon button to its right.

Figure 1: Localization options on User Preferences page

Locale can be set from multiple places in Intellicus. It will be applied in following order:

1. **User Preferences:** User can specify locale in user's personal preferences under Navigation > Personalization > Preferences.
2. **Organization Preferences:** If Default Locale is not set in personal preferences, then, Default Locale set for the organization (to which user belongs) under Navigation > Administration > Manage Users > Organization will be applied.
3. **Report Server Properties:** If Default Locale is not set for the organization, then, locale set on Navigation > Administration > Configure > Server page will be applied.
4. **Machine Locale:** If on Server Properties, Default Locale is set as "Default", then locale set on the machine where report server is running will be applied.

Time zones for report server, database and user

Value of "Time Zone" affects all the time dependent activities like report output (data of date type), scheduling and life of repository objects (for example, published reports).

There are three types of time zones:

- **Database time zone:** Configured on Navigation > Administration > Configure > Databases page.
- **Server time zone:** Set on Navigation > Administration > Configure > Server page.
- **User time zone:** Set on various places on portal.

User time zone can be set at multiple pages in Intellicus. It will be applied in following order:

1. **User Preferences:** The Time zone specified in user's personal preferences under Navigation > Personalization > Preferences will be applied.
2. **Organization Preferences:** If Default Time zone is not set in personal preferences, then, Default Time Zone set for the organization (to which user belongs) under Administration > Manage Users > Organization will be applied.
3. **Report Server Properties:** If Default Time Zone is not set for the organization, then, time zone set on Navigation > Administration > Configure > Server page will be applied.
4. **Machine Locale:** If on Server Properties, Default Time Zone is set as "Default", then time set on the machine where report server is running will be applied.

Portal

Portal components may not just be set to appear in any of the set language, but users can provide inputs on some of the portal pages in respective language. All the static portal text and validation messages appear in respective language.

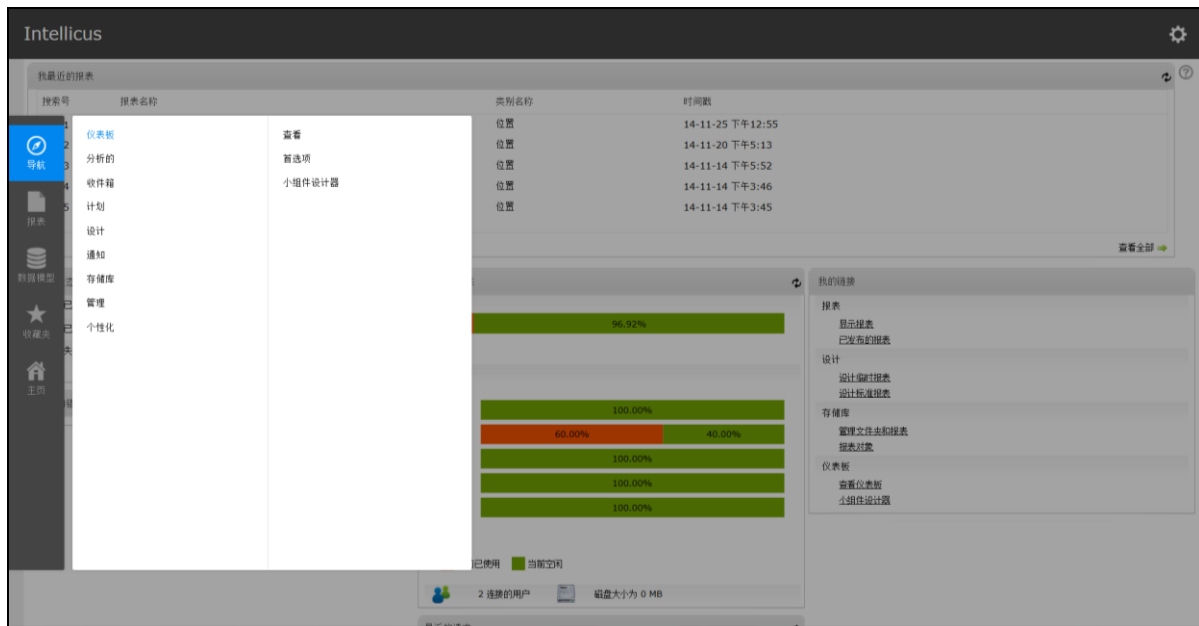


Figure 2: Portal running in Chinese

Users would be able to provide following details in respective language on portal:

- Name of Report
- Name of Category (Folder)
- Name of the Query Object
- Field caption (being set at the time of creating a query object)
- Dashboard name
- Dashboard Widget name
- Job name being setup from report list page (Quick job)
- Published Report name

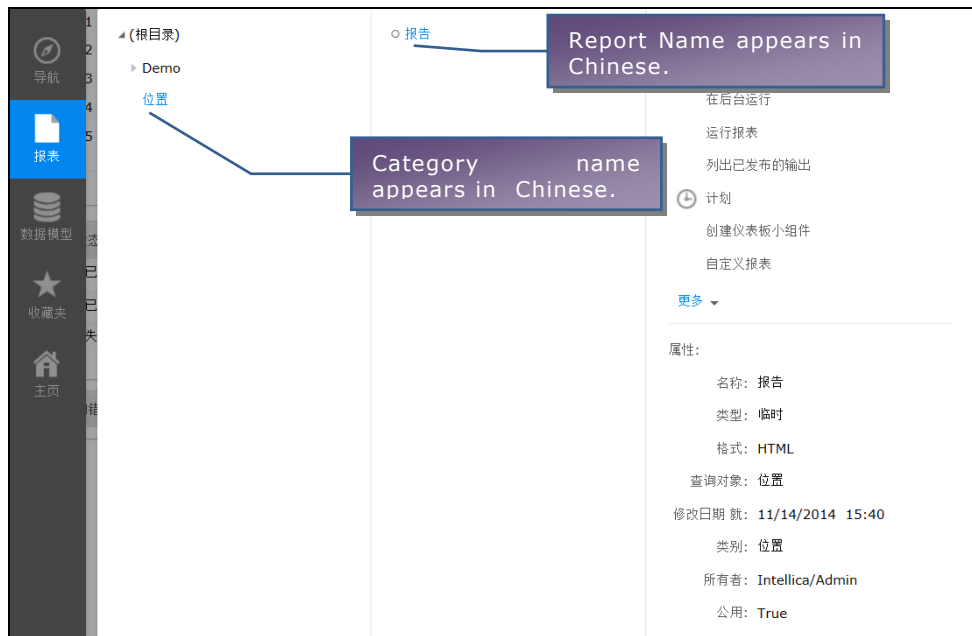


Figure 3: Report and Folder name across portal appears in the language they were specified in

Report data

Data values as well as labels placed on a report can be made to appear in the selected language. You can choose to:

- Receive output of selected reports in selected language and also all the reports deployed in a selected category.

During ad hoc-report's design, user QO (Data source) list can have localized entries. Field captions as well as values can also be provided in local language.

国家地区	Gold	Silver	Bronze	
USA	46	29	29	
China	38	27	22	
United Kingdom	29	17	19	65 3 G7
Russian Federation	24	25	33	82 4 BRICS
South Korea	13	8	7	28 5 Others
Germany	11	19	14	44 6 G7
France	11	11	12	34 7 G7
Italy	8	9	11	28 8 G7
Hungary	8	4	5	17 9 Others
Australia	7	16	12	35 10 Others
Japan	7	14	17	38 11 G7
Kazakhstan	7	1	5	13 12 Others
Netherlands	6	6	8	20 13 Others
Ukraine	6	5	9	20 14 Others
Cuba	5	3	6	14 15 Others
New Zealand	5	3	5	13 16 Others
Islamic Republic of Iran	4	5	3	12 17 Others
Jamaica	4	4	4	12 18 Others
Czech Republic	4	3	3	10 19 Others
North Korea	4	0	2	6 20 Others
Spain	3	10	4	17 21 Others
Brazil	3	5	9	17 22 BRICS
Belarus	3	5	5	13 23 Others
South Africa	3	2	1	6 24 BRICS
Ethiopia	3	1	3	7 25 Others

Figure 4: Report title (report name) and field titles appear in language other than English

What will continue to appear in English

Even after configuring, some of the items will continue to appear in English.

Report Server and 3rd party messages

Intellicus users interact with Intellicus portal, which in turn communicates with Intellicus Report Server. Due to any reasons (generally beyond control of Intellicus) if Report Server is not able to serve a request, it responds with an error message.

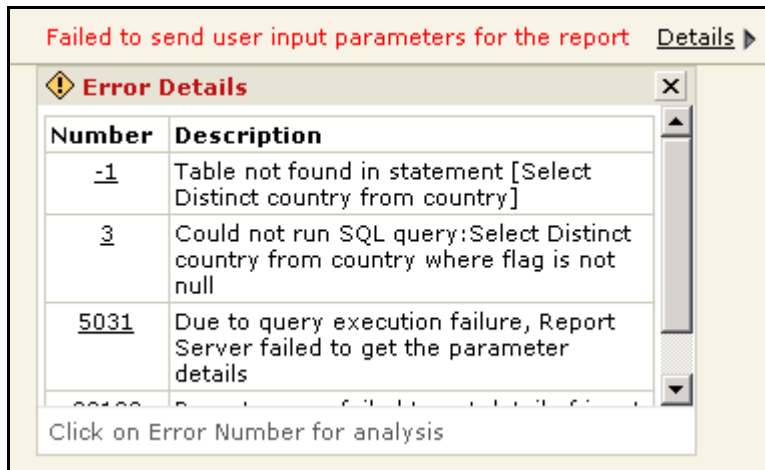


Figure 5: Error message appearing in English

Such messages coming from report server and 3rd party components will continue to appear in English.

Property values

During report design, user needs to set various properties of report components. For example component name, chart type, its data source and other options for chart component, etc. These values are stored along with report layout (IRL file).

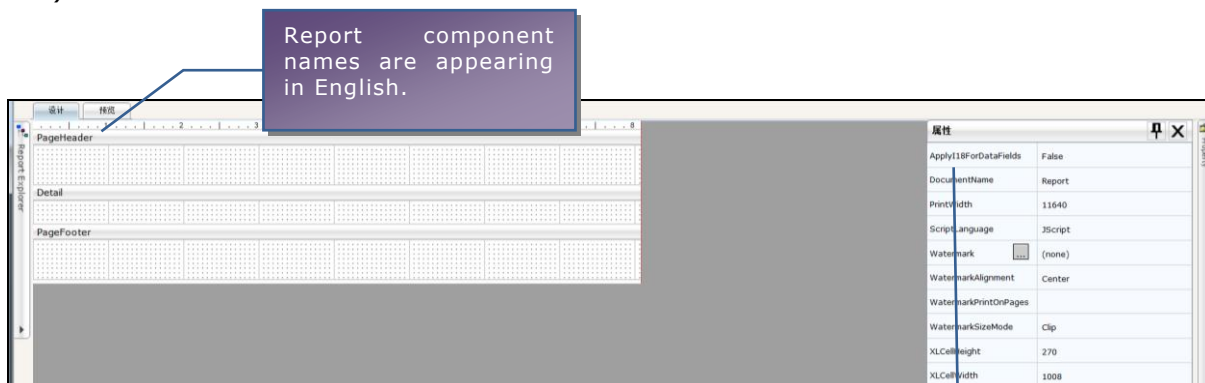


Figure 6: Property values that go in IRL appear in English

These property values appearing on web studio as well as other portal pages like Ad hoc Report Wizard will continue to appear in English.

Numeric values

All the numeric values will continue to appear in English. For example, calendar, serial numbers on portal pages and default values on various dialog boxes.



Figure 7: Calendar having numbers in English

Customizing locale dependent items

During data input (like Input Parameter Form), Intellicus expects input in default format of corresponding locale that is effective at that time. Similarly, for output, it formats data in default format of corresponding locale that is effective at that time.

If you want Intellicus to use other than default formats, you can provide your preferred formats in **localeconfigurations.xls** file. This file is available on Report Server at path:

```
<Intellicus installation path>
\Intellicus\ReportEngine\Config\i18n
```

	A	B	C	D	E	F	G	H	I	J	K	L
	Input date style/for	Input date-time separator	Input time style/format	Output date style/format	Output date-time separator	Output time style/format	Date GroupBy YEAR	Date GroupBy QTR	Date GroupBy MONTH	Date GroupBy WEEK	Date GroupBy	
1	Locale	mat	separator	style/format	style/format	separator	format	format	format	format	format	format
2	en_US	Long	Long	full	full	^	full	yy	Qq/yyyy	MM	W	dd
3	ja_JP							yyyy	Qq-yyyy	MMM	w	ddd-check
4	hi_IN								Qq/yy	MMMM	hhh	dddd
5	th_TH	full	full	full	full	full	full		Qq-yy	MMMM/yyyy	hhh	ddd/yy
6	zh_CN	full	full	full	full	full	full		q/yyyy	Qq	hh	dd/yyyy
7	ar_AE	Long	Long	Long	Long	Long	Long		q/yy			bngfghgfh
8	pl_PL	Long	Long	Long	Long	Long	Long		q-yy			fghfghfgh
9	es_VE	Long	Long	Long	Long	Long	Long		q			MMdd/yy
10	pl_PL	Long	Long	Long	Long	Long	Long		Q			dd MMMM yy
11	uk_UA	Long	Long	Long	Long	Long	Long		yy			MM/dd/yyyy

Figure 8: Partial contents of localeconfigurations.xls file ('localedata' sheet)

HELP sheet of the file contains instructions that will guide you in creating the file.

Note: You need to restart the Report Server after making changes and saving the file.

Character encoding of certain locale (that are not covered under UTF-8 encoding) is also required in this .xls file so that our web portal can understand which character set is to be used to display a particular locale:

Locale	Output time style/format	Date GroupBy DAY format	Encoding
en_US	HH:mm:ss	MM/dd/yyyy	
en_GB	HH:mm:ss	dd/MM/yyyy	
br_FR	HH:mm:ss	dd/MM/yyyy	
de_DE	HH:mm:ss	DD.MM.YY	ISO-8859-1
nl_NL	HH:mm:ss	dd-MM-yyyy	ISO-8859-1
fr_FR	HH:mm:ss	dd/MM/yy	ISO-8859-15
ja_JP	HH:mm:ss	yy/MM/dd	
pt_BR	HH:mm:ss	dd/MM/yyyy	ISO-8859-1
es_ES	HH:mm:ss	dd/MM/yyyy	ISO-8859-1
ro_RO	HH:mm:ss	dd/MM/yyyy	ISO-8859-1
sv_SE	HH:mm:ss	yyyy-MM-dd	ISO-8859-1
no_NO	HH:mm:ss	dd.MM.yyyy	ISO-8859-1
pl_PL	HH:mm:ss	dd.MM.yyyy	ISO-8859-1
sk_SK	HH:mm:ss	d.M.yyyy	ISO-8859-1
pt_PT	HH:mm:ss	dd/MM/yyyy	ISO-8859-1
tr_TR	HH:mm:ss	dd.MM.yyyy	ISO-8859-9
hu_HU	HH:mm:ss	yyyy.MM.dd	ISO-8859-1

Figure 9: Encoding details for languages

Configuring Intellicus Portal

To get multiple language support in Intellicus you need to make sure Intellicus portal and Intellicus server runs in **UTF-8** mode. This mode ensures the programs are able to load, process and display multi-byte language characters.

Configuring Locales appearing on Intellicus Portal

The list of Locales, which users can select a locale from, is controlled by DEFAULT_LOCALE options tag in the XML configuration file: "ReportServerProperties.xml". This file is placed at the path:

```
<Intellicus installation path>\Intellicus\ReportEngine\Config
```

For example, when you want to add "Chinese (Simplified)" as a new locale, then under the XML tag <OPTIONS NAME="DEFAULT_LOCALE"> in the above mentioned file enter the OPTION tag with OPTION entry:

```
<OPTIONS      NAME="DEFAULT_LOCALE"      TYPE="2"      VALIDATEFOR="0"
DISPLAY_TEXT="DEFAULT LOCALE" REFRESH="0" IS_HIDDEN="false">
  <OPTION DISPLAY_TEXT="Default">
    <VALUE><![CDATA[]]></VALUE>
  </OPTION>
  <OPTION DISPLAY_TEXT="Chinese (Simplified)">
    <VALUE><![CDATA[zh_CN]]></VALUE>
  </OPTION>
  <OPTION DISPLAY_TEXT="Chinese (Traditional)">
    <VALUE><![CDATA[zh_TW]]></VALUE>
  </OPTION>
  ...
</OPTIONS>
```



Note: You need to restart the Portal and Server after making any configuration changes.

If you want to remove any existing locale then you can remove the respective OPTION tag for that locale in the same file.

By default, English (US) is the available language. The list of languages supported in Intellicus that are license-controlled is given below:

- Chinese Simplified
- Chinese Traditional
- Czech
- Danish

- Dutch
- German
- Finnish
- French
- Hindi
- Hungarian
- Indonesian
- Italian
- Japanese
- Malay
- Norwegian
- Polish
- Portuguese
- Romanian
- Russian
- Slovak
- Spanish
- Swedish
- Swahili
- Turkish
- Vietnamese
- Thai
- Bulgarian
- Croatian
- Estonian
- Greek
- Korean
- Irish
- Serbian
- Ukrainian

Running Intellicus Portal in UTF-8 mode

An important prerequisite for Intellicus portal web server to serve language data is that it needs to run in **UTF-8** mode.

Intellicus Portal's running-mode is specified in run.bat startup file. This file is placed at path:

```
<Intellicus installation path>\Intellicus\Jakarta\bin
```

If the file has following entry, it means Intellicus Portal is running in UTF-8 mode.

```
set FILE_ENCODING=-Dfile.encoding=utf-8
```

This FILE_ENCODING variable is appended to the java launching parameters.



Note: If you don't want Intellicus Portal to run in UTF-8 mode, comment out the above entry in the run.bat with REM.

Running Intellicus Report Server in UTF-8 mode

To support multi-byte language characters, Intellicus Report Server also needs to run in **UTF-8** mode.

Intellicus Report Server's running-mode is specified in run.bat file. This file is placed at path:

```
<Intellicus installation path>\Intellicus\ReportEngine\bin
```

If the file has following entry, it means Intellicus Report Server is running in UTF-8 mode.

```
set FILE_ENCODING=-Dfile.encoding=utf-8
```

This FILE_ENCODING variable is appended to the java launching parameters.



Note: If you don't want Intellicus Report Server to run in UTF-8 mode, prefix the above entry in the run.bat with REM.



Important: Intellicus metadata is stored in database (known as repository database). To get multiple language support for Intellicus, make sure repository database is configured to support UTF-8 character set (example: locale-specific collation in MS SQL). Also make sure 'Charset Encoding' is set to UTF-8 under Administration > Configure > Databases



Important: Make sure, fonts that support Unicode fonts, like Arial Unicode MS are installed on machine where:

- Intellicus server is running, and
- the portal is being browsed.

Pre-configured items on Portal

Intellicus portal is pre-configured to accept following items in any language:

- Folder name (Category name)
- Report name
- Report title
- Report description
- Published Report name
- Published Report description
- Query name
- In a query, Caption name for selected field
- OLAP Report name, Cube Object name
- Quick Schedule name
- Job name (Schedule Job page)
- Dashboard name
- Dashboard Widget name
- Organization/User/Role name, Organization/User/Role description
- Notification name

After a respective item is entered and saved in a selected language, it will appear in that language across portal pages without any configuration needs.

Field Caption name if specified in a local language will appear in local language on Ad hoc reports.



Note: When you import a QO from within Intellicus Desktop Studio, you receive only SQL part of the QO. So, Fields captions specified in a local language are not available for use on Standard Reports.



Important: These items will appear in the language they were entered and saved regardless of the language you select.

管理 > 配置 > 服务器

数据库 服务器 客户端 查看器 临时向导 门户菜单 打印设置 许可证 配置文件

保存 取消

常规
文件夹和路径
网络设置
并发管理
数据缓存
内存管理
相容性
容错
呈现
计划程序和邮件
超时
其他

监听器 IP 地址
配置客户端组件可从其中发送报表请求的 IP 地址。如果留为空白，则报表服务器将可从任何计算机收到请求。

监听器端口
配置客户端组件发送请求时，报表服务器要倾听的网络端口。报表服务器将在启动时与此端口绑定。它应该是报表服务器计算机上有效且可用的端口号。客户端组件将需要此端口号以及报表服务器网络地址才能指向此报表服务器

主机 URL
配置将作为为电子邮件生成的已保存报表链接前缀的 URL 路径。

超级链接相对路径
配置与集成主机应用程序相关的相对路径。此值将作为超级链接的前缀，以形成链接的报表和相关 Web 页面的正确 URL。

压缩网络数据
配置客户端组件与报表服务器是否使用压缩的数据互相通信。

深化最大 URL 长度
指定要在 GET 中提交的超级链接报表 URL 的大小限制(以字符为单位)。如果生成的超级链接大于上述大小，会提交 POST 请求。

优先级线程池大小

安全的连接端口

SSH 公用密钥路径

SSH 专用密钥路径

Figure 10: Portal in Chinese language

Portal can be localized to make all the portal-text appear in the selected language. To do this, you need to:

- Create language bundle file having key-value pair for all possible values that appear on portal.



Note: You need to restart the portal after making configuration related changes. Changed configuration will be effective only after server-restart.

Language Bundle file on Portal

All the text of portal components comes from respective language bundle file. This file has one "key-value pair" for each piece of information appearing on portal - like caption names, options appearing in combo boxes, error messages, numbers, dates and months.

Intellicus identifies these files through their file names. For example, en_US.xls is the language bundle file for Key-value in English.

To localize a portal in a language, you need to create such a file for that language.

Portal bundle file has content in two sheets. One sheet needs to have name as "meta". There is no name related requirement for other sheet of the file.

The sheet having name 'meta'

This sheet contains the Language name (that should be displayed in the drop-down) and the associated locale.

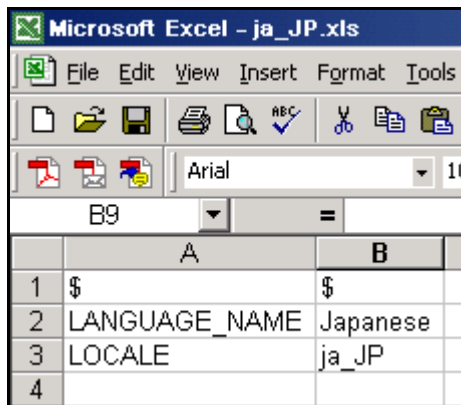


Figure 11: "meta" sheet of Portal's language bundle file



Note: Don't use the 1st row.

Other sheet

This sheet (generally Sheet1) contains key-value pairs of text used on Intellicus Portal. When a key is found on the portal page, a corresponding value is searched from this sheet and displayed on the portal.

	A	B
339	Border_Color	枠線の色
340	Border_Width	ボーダー幅
341	Both_dates_must_be_entered.	日付の両方が必要です。
342	Both_passwords_must_be_same.	同じパスワードをしなければならない
343	BOTH	両方
344	Both	両方
345	Bottom	底

Figure 12: Sheet1 of a bundle file on Portal

Column A of this sheet contains all the keys. Column B of the same row contains respective values of that key-value pair.

Best way to create a language bundle file is:

1. Copy en_US.xls as the new file.
2. Change values in Column B of **meta** sheet.
3. Replace contents of Column B (of sheet having key-value pairs) with translated content.
4. Save the file (with the right file name).

File Name

<locale name>.xls

For example,

- For **English** to be used in **United States**, the file name should be **en_US.xls**.
- For **Spanish** to be used in **United States**, the file name should be **es_US.xls**.
- For **Japanese** to be used in **Japan**, the file name should be **ja_JP.xls**.

Location

Language Bundle files are placed on machine running portal at path:

```
<Intellicus installation path>  
\Intellicus\Jakarta\webapps\intellicus\client\lang
```



Note: Information in language bundle file is cached at report-server start up time. Restart the report server when you add a language resource bundle file on the report server.

Points to remember while creating a language bundle file

- Whichever version of MS Excel you use to create the language bundle file, remember to save the file as .xls file.
- Each entry is a key-value combination. Key is used inside the program and value is displayed on screen. So, translate the values (entries in column B).
- Generally, values are same as keys. The only difference is, for value, "_" is replaced by a space. In some cases (like 24hh-mm-ss), key is different than value (24hh:mm:ss).
- If you encounter single-quote or a double-quote anywhere in the value, prefix it with a \.
- %1, %2, etc. needs to be kept as it is. These are the values that will be replaced by actual values at run time.
- \n in a value, means "next line". If you notice two sentences separated by a \n, keep them that way, in order to carry the next sentence in the next line. Removing \n will make the next sentence continue on the same line.
- Some of the keys like DaysOfMonth, DaysOfWeek, CalendarMonths, InitialMonthsOfYear and InitialDaysOfWeek have multiple values separated by comma. The translated values should be placed exactly the same way as that in English bundle file. Use comma in English text to separate two values. Avoid space between two values.

Configuring Intellicus Server

To get multiple language support in Intellicus you need to make sure Intellicus (server and portal) runs in UTF-8 mode.

You can run Intellicus server and portal in UTF-8 mode as per instructions provided in the previous chapter.

This chapter explains configurations required on Intellicus Server for localization.

Language Bundle file on Report Server

Intellicus Report Server refers to this language bundle file for conversion information when source data of the report is in English, but the report output is required in a selected local language.

Report Server treats every piece of data coming from database as “key” and tries to find matching “value” (key-value pair) in the language bundle file. So, the language bundle file on Report Server needs to have all the possible keys (data values that may come from database) and values to be used for the selected language.

Information in the report server language bundle file is spread across multiple sheets:

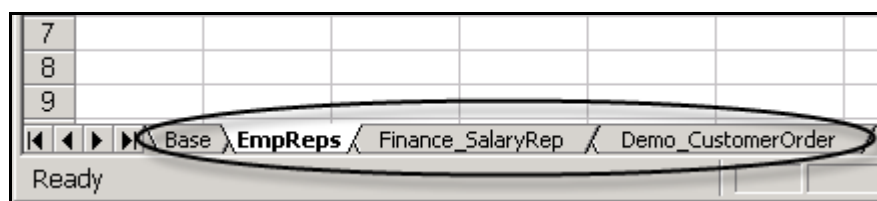


Figure 13: Tabs on language bundle file on Report Server

- **Base:** This sheet (necessarily called Base) contains translation information (key-value pair) that needs to be applied to all the reports deployed in all the categories.
- **CategoryName (the actual category name):** This sheet contains translation information (key-value pair) that needs to be applied to the category (folder) identified by the sheet having respective category name. For example to translate reports deployed in “EmpReps” category, specify sheet name as “EmpReps” and specify key-value pairs on that sheet.
- **CategoryName_ReportName (the actual category name+underscore+actual report name):** This sheet contains translation information (key-value pair) that needs to be applied to the “ReportName” deployed under “CategoryName”. For example, to translate “SalaryRep” deployed under “Finance” category, create a sheet with name “Finance_SalaryRep” and specify key-value pairs on that sheet.

For all of the above sheets, key is specified in column A and value is specified in Column B. Key is the phrase that will be found on report. As specified above, value is the string with which the phrase will be replaced with.

Location

This file is placed on machine running Report Server at path:

```
<Intellicus installation path>  
\Intellicus\ReportEngine\resourcebundles
```

Intellicus identifies these files by their file names. For example, ja_JP.xls is the language bundle file for key-value in Japanese.



Note: Information in language bundle file is cached at report-server start up time. Restart the report server when you add a language resource bundle file on the report server.

Setting value of Report Server Property “Text Output Encoding”

When Intellicus is run in multi-language mode, Intellicus Server needs to run in UTF-8 file encoding (by setting FILE_ENCODING in run.bat file. This file is used to launch Intellicus server).

Intellicus supports output generation in various formats including CSV, text and Raw-Text.

Programs that may be used to open such files may not support UTF-8 encoding. If that is the case and if you are aware of the encoding those programs are configured to read, you can override the value set by FILE_ENCODING in run.bat file.

To change encoding for report generated in any of the text-based output types (Text, CSV or RAWTEXT) set value of Report Server property **Text Output Encoding** (Navigation > Administration > Configure > Server > Rendering) to the one you need.

Default Browser Configure HTML report output rendering standard. Set IE to use MS Internet Explorer as primary browser For other browsers, set OTHERS. Default: IE.	IE
Text Output Encoding Configure report server generated CSV, TEXT report output file encoding to match computer's file encoding.	UTF-8
Text Output Font Factor Specify the adjustment factor for horizontal spacing between text controls for TXT output format.	6

Figure 14: Setting value of Text Output Encoding

This property is hot deployed. You need not re-start the Report Server to get the effect of new value specified for this property.



Important: To keep these configurations intact across versions during an upgrade, you need to make sure:

- 1) the configuration files are not overwritten during version upgrade or any patch application.
- 2) that you keep a backup of the configuration files, in case the upgrade instructions require you to overwrite the files, then you can ensure that you merge your entries into the new files.

Report output localization

Report getting localized data from database

Report data comes from the database. If this database already has localized content (content in script other than English), then you need to do following to make sure Intellicus Report Server generates such reports in that language:

- If text-editor you use to open a report generated in text-based output types like (Text, CSV or RAW-TEXT) uses an encoding other than UTF-8, specify the required encoding by setting value of Report Server property **Text Output Encoding** (Navigation > Administration > Configure > Server > Rendering).
- During report design, use fonts that support Unicode fonts, like Arial Unicode MS. For ad hoc reports, make sure all the templates use fonts that support Unicode fonts, like Arial Unicode MS.

In this case, you will not need report server language bundle file.

To localize labels on report

Label is a static text control appearing on a report. Value of such a control does not come from a database. It is typed in during report design. To localize such static text controls, you need to:

- If text-editor you use to open a report generated in text-based output types like (Text, CSV or RAW-TEXT) uses an encoding other than UTF-8, specify the required encoding by setting value of Report Server property **Text Output Encoding** (Navigation > Administration > Configure > Server > Rendering).
- During report design, use fonts that support Unicode fonts, like Arial Unicode MS. For ad hoc reports, make sure all the templates use fonts that support Unicode fonts, like Arial Unicode MS.

In this case, you also need to create language bundle file having key-value pair for all of static text controls used in the report. This file will be placed on Report Server.



Note: You need to restart report server and portal after making configuration related changes. Changed configuration will be effective only after server-restart.

Report data is English, but report output needed to be localized

When a report-data comes from database having values in English, Intellicus report server can generate output of such a report in any of the language configured in Intellicus.

To localize output of such a report, you need to:

- If text-editor you use to open a report generated in text-based output types like (Text, CSV or RAW-TEXT) uses an encoding other than UTF-8, specify the required encoding by setting value of Report Server property **Text Output Encoding** (Navigation > Administration > Configure > Server > Rendering).
- During report design, use fonts that support Unicode fonts, like Arial Unicode MS. For ad hoc reports, make sure all the templates use fonts that support Unicode fonts, like Arial Unicode MS.
- Apply `isForDataFields` - Report level property in Studio. Set value of this property to True. By default this property is set to FALSE.
 - **True:** Based on the language user has selected at the time of login, Report server translate report data from English to respective language and that way generates the report output in selected language. For translation it uses the language bundle file placed on Report Server machine.
 - **False:** Report Server does not translate report data before generating report output.

You also need to create language bundle file having key-value pair for all possible values that may appear on report. This file will be placed on Report Server.



Note: You need to restart report server and portal after making configuration related changes. Changed configuration will be effective only after server-restart.



Note: You can translate Report title, Report name, Report header, Grouping details and Report output. Apart from these, Label captions that appear on various controls like chart, matrix etc. can also be translated.

To localize email messages

Email message notifications in Intellicus can be localized by placing a folder with the locale name, example: folder name zh_CN (Chinese Simplified) under:

<Intellicus installation path>\Intellicus\ReportEngine\Config\messages\mails

Keep the translated messages text files under the above folder saved using UTF-8 Encoding.

Appendix

How to apply a bundle file

Instructions on how to create a bundle file based on English bundle file are already provided in the document.

Here are the steps to be followed if you already have a bundle file and you want to replace it with another file of the same language.

Step 1. Backup the bundle file, which will be replaced by the new one.

It is always a good idea to backup a file before replacing it.

Portal bundle file is available here:

```
<Intellicus Installation path>  
\Intellicus\Jakarta\webapps\intellicus\client\lang
```

Report Server bundle is available here:

```
<Intellicus Installation path>  
\Intellicus\ReportEngine\resourcebundles
```

Step 2. Copy the bundle file at respective location.

Depending on the bundle file (portal or report server) you are applying, copy the file at location provided above on machine running Portal or the machine running Report Server.

Step 3. Restart Server.

- After replacing the bundle file at portal, restart web server.
- After replacing the bundle file at report server, restart report server.

How to change a value in a bundle file

Key-value pair of a language bundle on portal may have been used at multiple places. After opening the portal in respective language, you may find need to change the entries that might not be translated in right context.

Same may happen with language bundle file at the report server.

Here are the steps to be followed if you already have a language bundle file and need to change one or more values in it.

Step 1. Backup the bundle file.

It is always a good idea to backup a file before making any changes in it.

Portal bundle file is available here:

```
<Intellicus Installation path>  
\\Intellicus\Jakarta\webapps\intellicus\client\lang
```

Report Server bundle is available here:

```
<Intellicus Installation path>  
\\Intellicus\ReportEngine\resourcebundles
```

Step 2. Open the file and search the value to be changed.

Open the language bundle file in MS Excel. Make respective sheet active. Search for the value to be changed.

The value you are trying to change may appear as part of other keys in the file. Before clicking "Replace" button, make sure you are replacing the right value.



Tip: To reach the right entry sooner, you can select **Match Case** or **Find entire cells only** checkboxes.

Save the file after making changes.

Step 3. Restart Server.

- After making changes and saving the bundle file at portal, restart web server.
- After making changes and saving the bundle file at report server, restart report server.