

Installing Intellicus on Mac

Intellicus Enterprise Reporting and BI Platform



©Intellicus Technologies
info@intellicus.com
www.intellicus.com

Copyright © **2014** Intellicus Technologies

This document and its content is copyrighted material of Intellicus Technologies. The content may not be copied or derived from, through any means, in parts or in whole, without a prior written permission from Intellicus Technologies. All other product names are believed to be registered trademarks of the respective companies.

Dated: April 2014

Acknowledgements

Intellicus acknowledges using of third-party libraries to extend support to the functionalities that they provide.

For details, visit: <http://www.intellicus.com/acknowledgements.htm>

Contents

Installing Intellicus on Mac 1

- System Pre-requisites 1
- Installing the product 2
- Start Intellicus..... 5
 - To Start the Report Server and Web Server 5
 - To Start the Report Server Only..... 5
 - To Start Intellicus Web Server Only 6
 - To Start Intellicus Web Reporting suite 6
 - Logging into Intellicus Web reporting suite 7
- Stop Intellicus 8
 - To Stop the Report Server and Intellicus Web Server 8
 - To Stop the Report Server 8
 - To Stop the Web Server 8
- Uninstall Intellicus 9

Installing Intellicus on Mac

Instructions for installation and running Intellicus on Mac are organized into the following sections:

- Installing the product.
- Starting the Intellicus Report Server.
- Starting the Intellicus web server.
- Starting the Intellicus suite in browser.
- Logging into the Intellicus.
- Stopping the Intellicus Report Server.
- Stopping the Intellicus web server.
- Uninstalling the product.

System Pre-requisites

- **Memory:** 2 GB of RAM or more.
- **Storage Space:** 2 GB or more.
- **Internet Browser:** Internet Explorer 8.0 or a higher version.



Important: To be able to install Intellicus, you are required to have administrative privileges on the machine.

Installing the product

You can follow the below mentioned steps to install the product:

Copy the setup of Intellicus (*Intellicus7.1SP1_mac64.dmg* file) on the target machine where Intellicus is to be installed.



Note: In case Intellicus is already installed on your machine, make sure you stop both the Report and Web Servers.

The Intellicus setup contains *Intellicus.mpkg* file to be executed in order to install Intellicus:

1. The 'Introduction' screen appears.

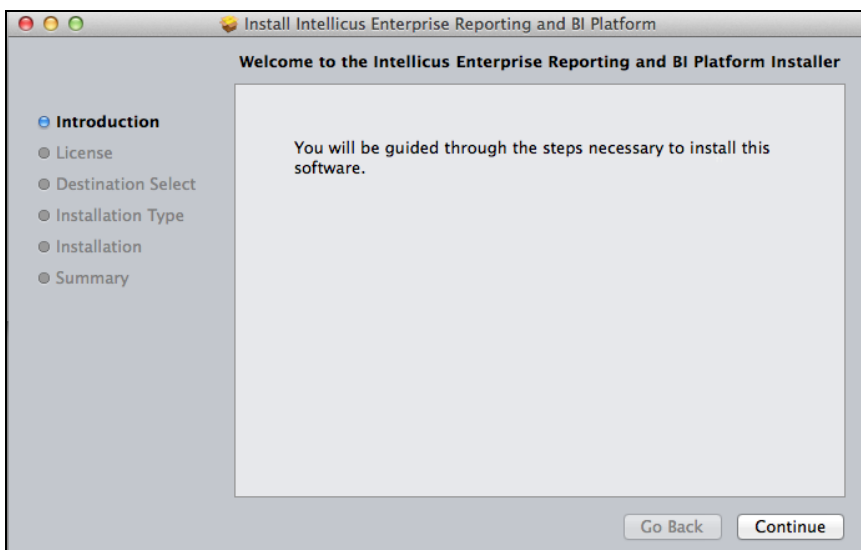


Figure 1: Intellicus Introduction Screen

Click "**Continue**".

2. Click "**Continue**" on the 'License' screen.

Click to agree on the screen that pop-ups.

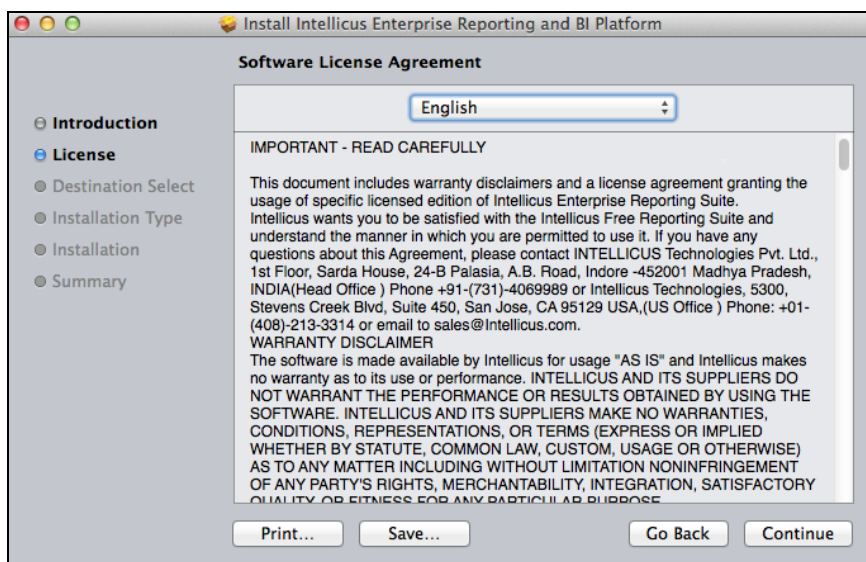


Figure 2: Intellicus License Screen

3. Click "**Install**" on the 'Installation Type' screen.

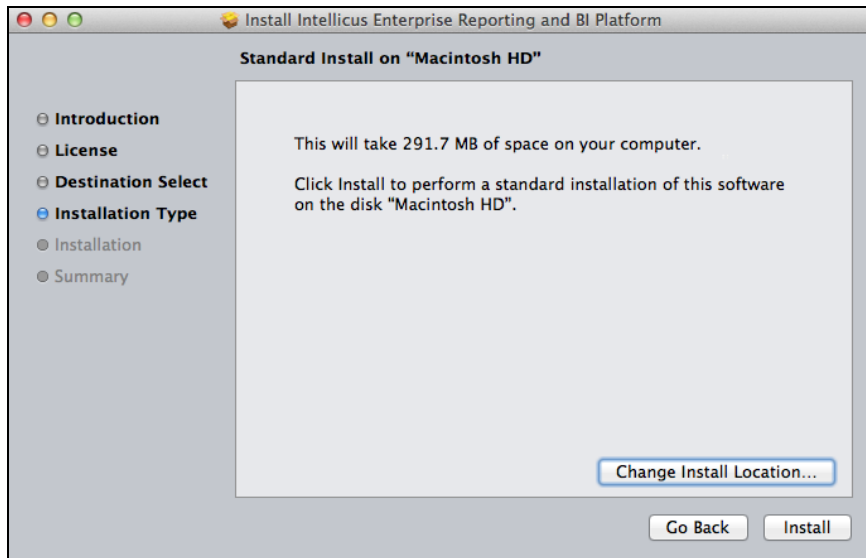


Figure 3: Intellicus Installation Type Screen

You can also select to choose a disk drive upon clicking "**Change Install Location**".

4. Enter administrator's Name and Password.



Figure 4: Intellicus Install Software Screen

Click "**Install Software**" to complete the installation.

5. The underneath screen shows the successful installation.

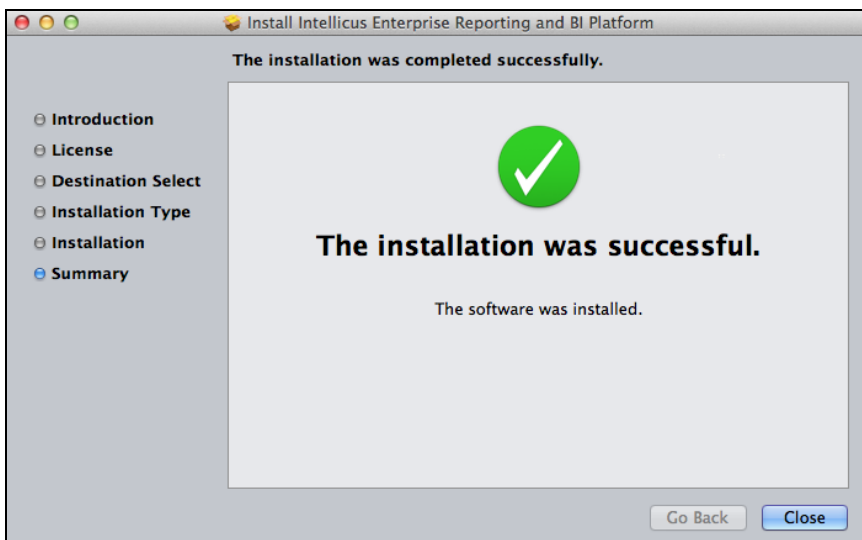


Figure 5: Intellicus Install Summary Screen

Start Intellicus

You can follow the below mentioned steps to start the Report Server and Web Server:

To Start the Report Server and Web Server

Intellicus provides a script (intellicus.sh) which is responsible to launch, stop & monitor the application. This script is located at /Applications/Intellicus.

It expects a user input to perform the appropriate action

- start : to start the report server and web server
- stop : to stop the report server and web server
- status : to provide the status of report server and web server

1. To launch the application run the **intellicus.sh** script file with **start** as user input

```
./intellicus.sh start
```

It will launch the Intellicus report server and web server.

2. To monitor the application run the **intellicus.sh** script file with **status** as user input

```
./intellicus.sh status
```

It will return the status of Intellicus report server and web server.

To Start the Report Server Only

Intellicus provides a script (reportserver.sh) which is responsible to launch, stop & monitor the Intellicus report server. This script is located at /Applications/Intellicus.

It expects a user input to perform the appropriate action

- start : to start the report server
- stop : to stop the report server
- status : to provide the status of report server

1. To launch the report server run the **reportserver.sh** script file with **start** as user input

```
./reportserver.sh start
```

2. To monitor the report server run the **reportserver.sh** script file with **status** as user input

```
./reportserver.sh status
```

You can also follow the below mentioned steps to start the Report Server:

To start the Report Server, run the file 'run.sh' located in the '/Applications/Intellicus/reportengine/bin' folder.

```
./run.sh
```

To Start Intellicus Web Server Only**You can follow the below mentioned steps to start the Web Server only:**

Intellicus provide a script (webserver.sh) which is responsible to launch, stop & monitor the Intellicus web server. This script is located at /Applications/Intellicus.

It expects a user input to perform the appropriate action

- start : to start the web server
- stop : to stop the web server
- status : to provide the status of web server

1. To launch the web server run the **webserver.sh** script file with **start** as user input

```
./webserver.sh start
```

2. To monitor the web server run the **webserver.sh** script file with **status** as user input

```
./webserver.sh status
```

You can also follow the below mentioned steps to start the Web Server only:

To start the Intellicus Web server, run the file 'startup.sh' located in the '/Applications/Intellicus/jakarta/bin' folder.

```
./startup.sh
```

To Start Intellicus Web Reporting suite

1. Open the browser.
2. In address bar, specify the following URL:

```
http://<IP of the webserver>/intellicus
```

For example, <http://120.98.99.256/intellicus>

If user has changed the Webserver port, specify the following URL:

```
http://<IP of the webserver:port number>/intellicus
```

For example, if the changed port number is 7000, the URL would be:

```
http://120.98.99.256:7000/intellicus
```

Logging into Intellicus Web reporting suite

User needs to provide following information to log into Intellicus.

- User Name: Admin
- Password: Admin
- Organization Name: Intellica

Click **Login** after entering the required information.

Stop Intellicus

To Stop the Report Server and Intellicus Web Server

You can follow the below mentioned steps to stop the Report Server and Web Server:

To stop the application run the **intellicus.sh** script file with **stop** as user input. This file is available in /Applications/Intellicus folder.

```
./intellicus.sh stop
```

It will stop the Intellicus report engine and web server.

To Stop the Report Server

To stop the report server run the reportserver.sh script file with stop as user input. This file is available in /Applications/Intellicus folder.

```
./reportserver.sh stop
```

You can also follow the below mentioned steps to stop the Report Server:

Run the file shutdown.sh. This file is available in /Applications/Intellicus/reportengine/bin folder.

```
./shutdown.sh
```

To Stop the Web Server

To stop the web server run the webserver.sh script file with stop as user input. This file is available in /Applications/Intellicus folder.

```
./webserver.sh stop
```

You can also follow the below mentioned steps to stop the Web Server:

Run the file shutdown.sh. This file is located in the /Applications/Intellicus/jakarta/bin folder.

```
./shutdown.sh
```

Uninstall Intellicus

You need to stop the Report Server and Web Server as explained in the previous section.

To uninstall, delete the /Applications/Intellicus folder under the installed disk drive.