



Deploying Intellicus Portal on SunOne AppServer

Intellicus Enterprise Reporting and BI Platform



©Intellicus Technologies
info@intellicus.com
www.intellicus.com

Copyright © **2010** Intellicus Technologies

This document and its content is copyrighted material of Intellicus Technologies. The content may not be copied or derived from, through any means, in parts or in whole, without a prior written permission from Intellicus Technologies. All other product names are believed to be registered trademarks of the respective companies.

Dated: - December 2010.

Acknowledgements

Intellicus acknowledges using of third-party libraries to extend support to the functionalities that they provide.

For details, visit: <http://www.intellicus.com/acknowledgements.htm> .

Contents

Deploying Intellicus in SunOne App. Server	5
Prerequisites	5
Deployment process.....	5

Deploying Intellicus in SunOne App. Server

This document provides steps to deploy Intellicus portal on SunOne application server 9.1 on Windows OS.

Prerequisites

It is assumed that:

- Intellicus Report Server is installed up and running.
- SunOne application server 9.1 is installed.

Deployment process

Step 1. Start the server

To start the server from Start menu, click **Start > Programs > Sun Microsystems > Application Server PE 9 > Start Default Server** .

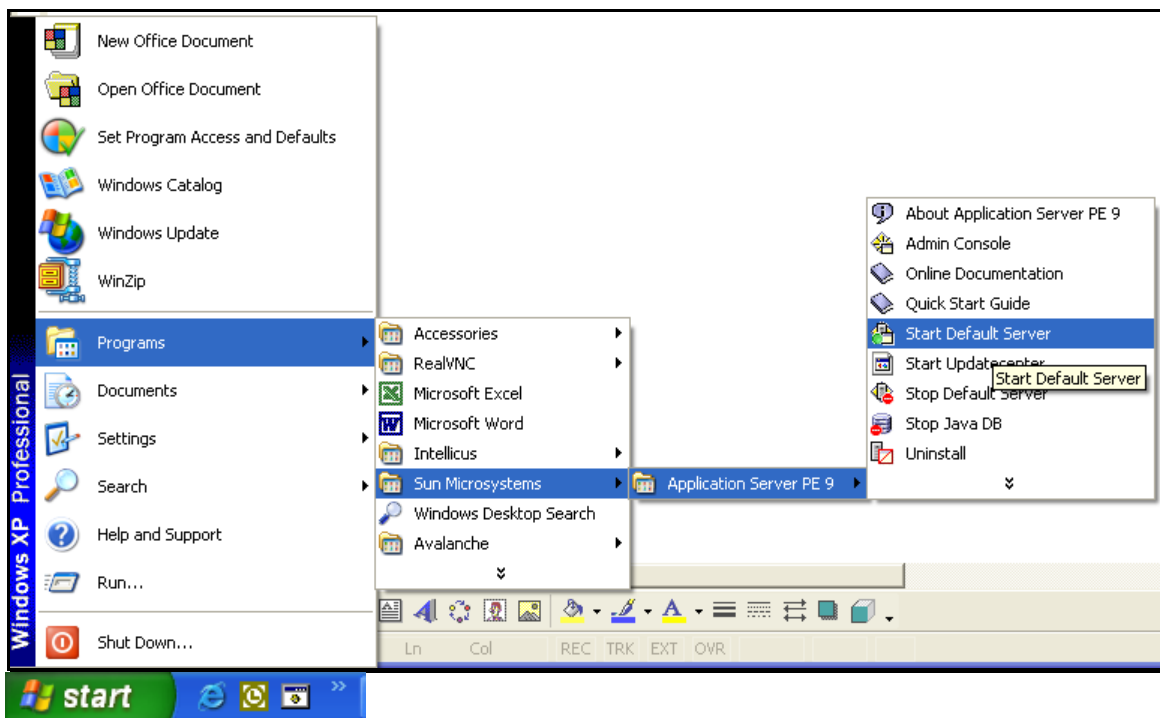


Figure 1

Step 2. Getting the Admin console

After the server is up and running, open the Admin console. To get Admin Console, click

Start > Programs > Sun Microsystems > Application Server PE 9 > Admin Console.

It will open **Server Application Login** screen in a new browser window.

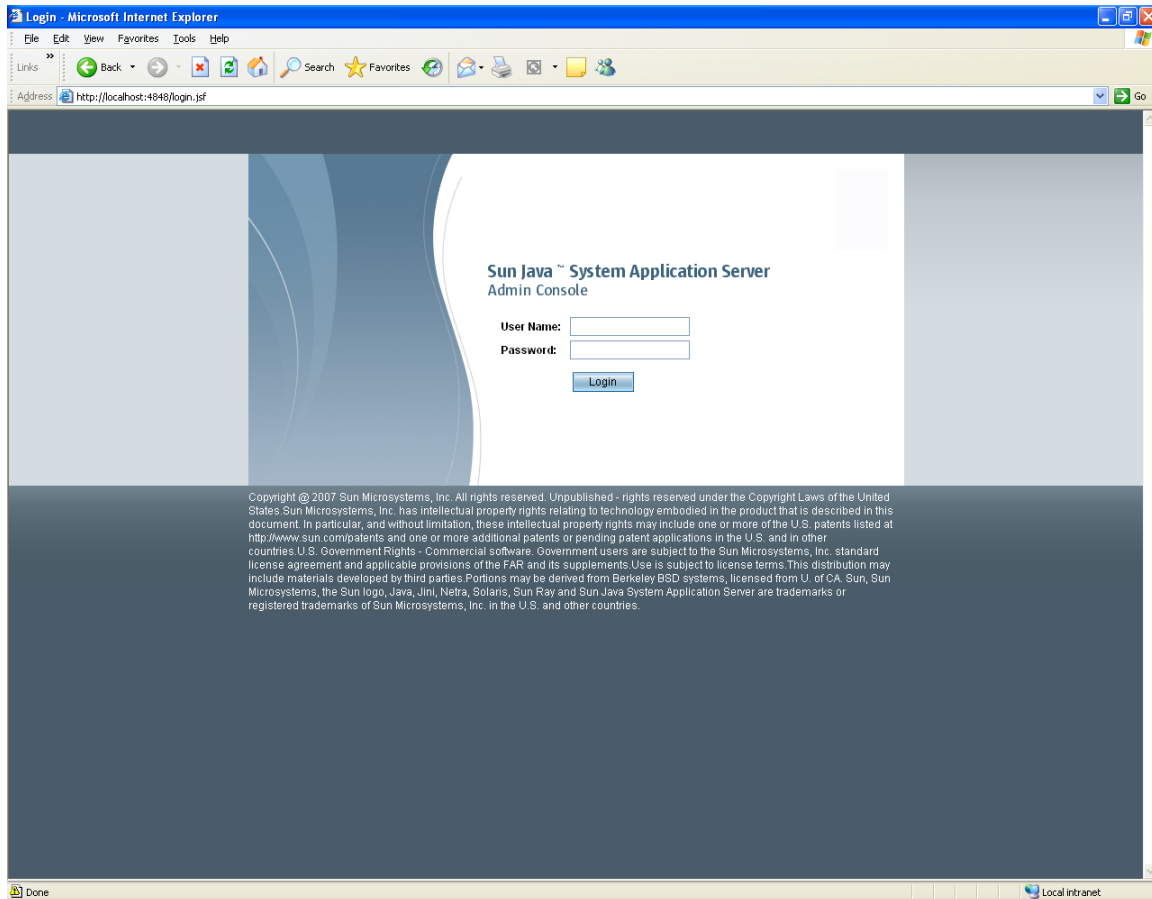


Figure 2

Specify user name and password. This should be the one that was specified on the **Admin Configuration** screen during Installation process.

Click **Login** button.

Common Tasks page appears.

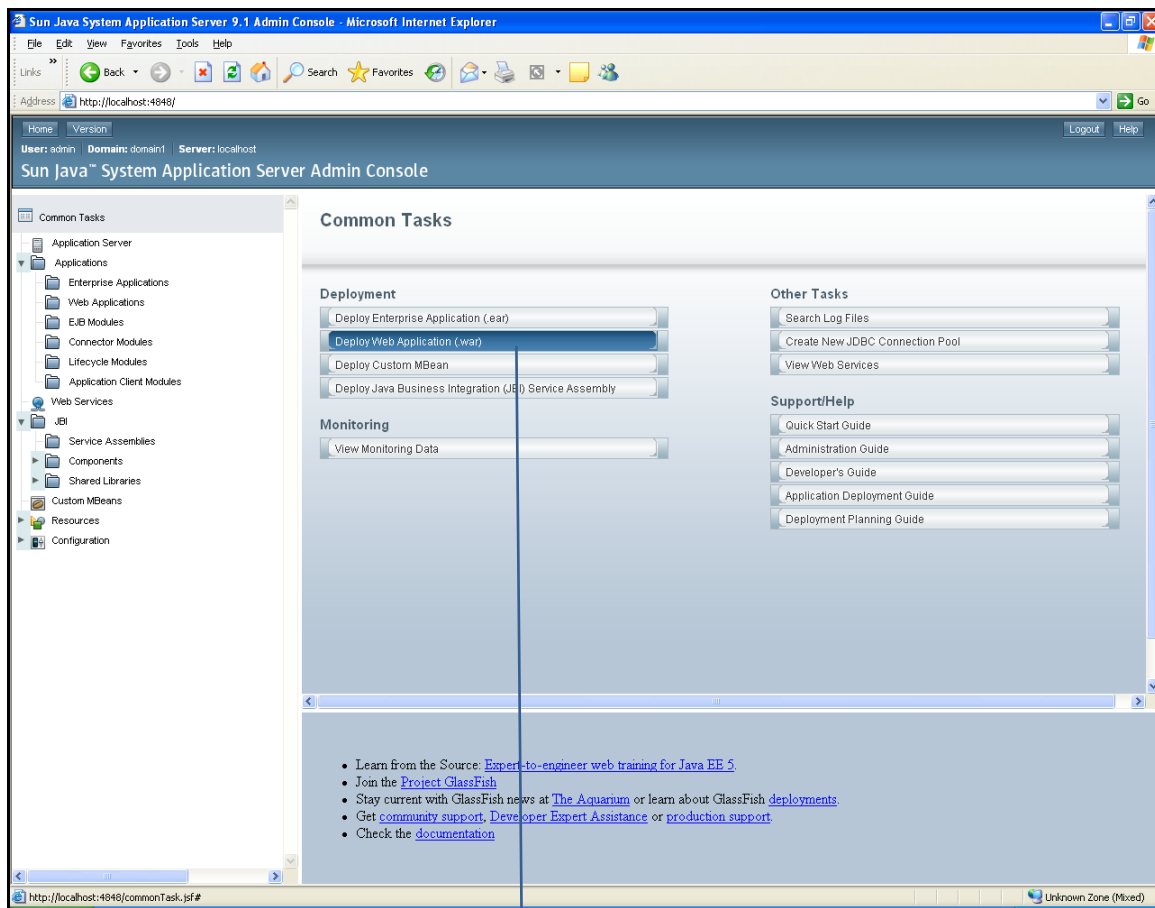


Figure 3

Click **Deploy Web Application (.war)**

Under **Deployment** section, click **Deploy Web Application (.war)**.

Deploy Enterprise Applications/Modules page appears.

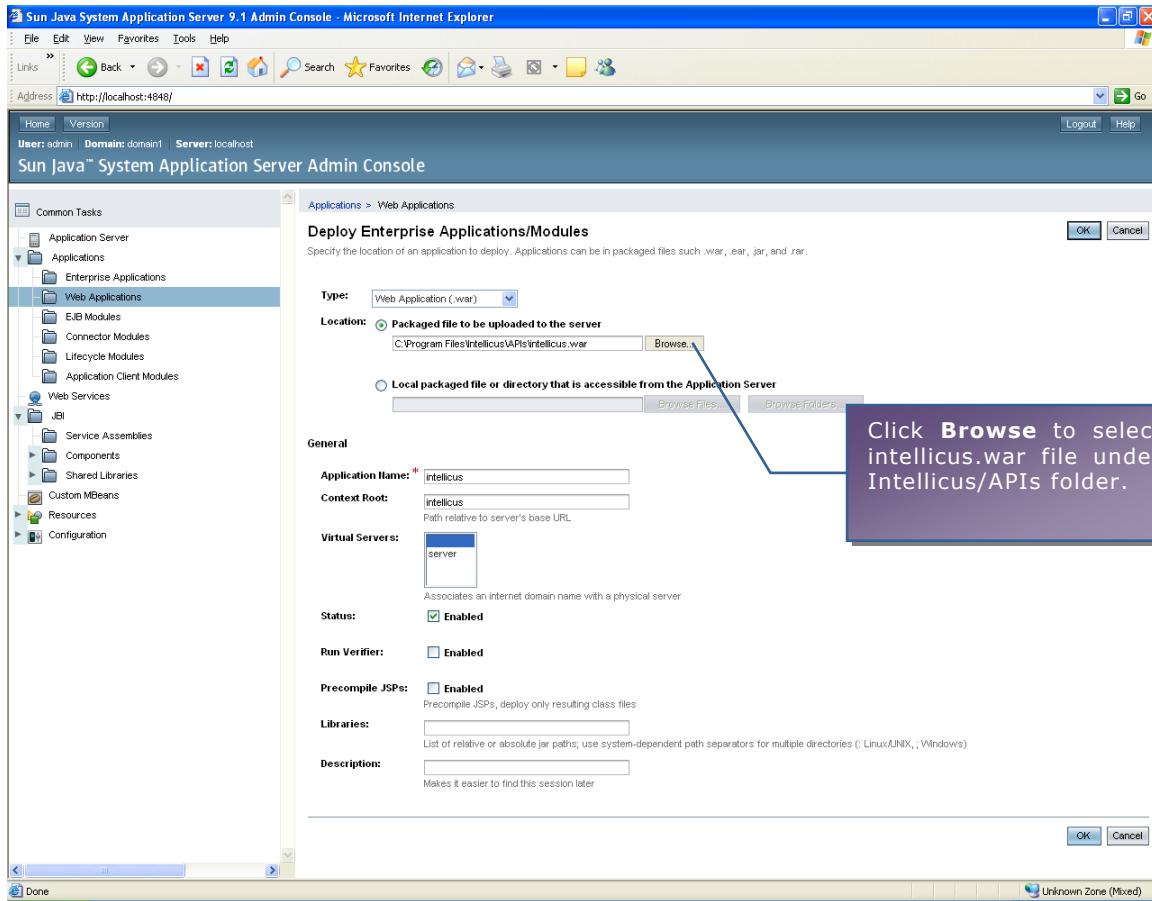


Figure 4

intellicus.war is located in \Intellicus\APIs folder. Click **Browse** to select intellicus.war file located in this folder.

For example, if Intellicus is installed in C:\Program Files, then path of war file will be C:\Program Files\Intellicus\APIs\intellicus.war.

Click **OK** after selecting the path.

Web Applications page appears.

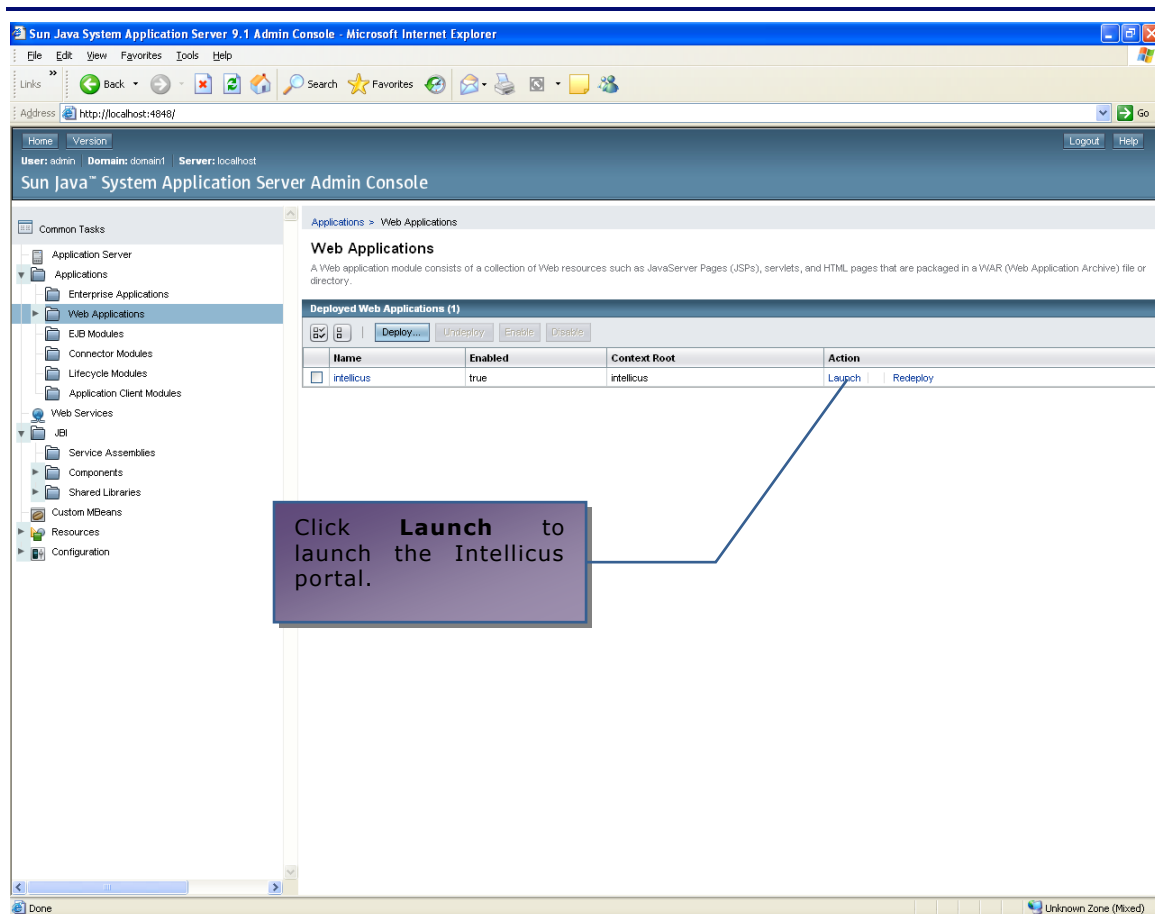


Figure 5

Click **Launch** link under **Action** to launch the Intellicus web Portal.

Specify following URL in address-bar of a browser as per following syntax to access the application.

http://MachineIP:Port/intellicus .

- **MachineIP:** IP of your machine where Intellicus portal is deployed on SunOne is running.
- **Port:** Port for SunOne Application Server. Port number 8080 is default for oracle application server.

