



Deploying Intellicus Portal on WebLogic

Intellicus Enterprise Reporting and BI Platform



©Intellicus Technologies
info@intellicus.com
www.intellicus.com

Copyright © **2010** Intellicus Technologies

This document and its content is copyrighted material of Intellicus Technologies. The content may not be copied or derived from, through any means, in parts or in whole, without a prior written permission from Intellicus Technologies. All other product names are believed to be registered trademarks of the respective companies.

Dated: - December 2010.

Acknowledgements

Intellicus acknowledges using of third-party libraries to extend support to the functionalities that they provide.

For details, visit: <http://www.intellicus.com/acknowledgements.htm> .

Contents

Deploying Intellicus portal on WebLogic	4
Download Intellicus web application for WebLogic	4
To Create WebLogic Domain for Intellicus	5
Create Domain in Web Logic 8.1 on Linux & Solaris	5
To Create WebLogic Domain on Windows	10
To deploy Intellicus as Web Application	14
To change the Listener Port	18

Deploying Intellicus portal on WebLogic

The chapter provides instructions to deploy Intellicus in WebLogic on Linux platform:

- Install the Intellicus Web-based Reporting Suite.
- Start the Intellicus Report Server.
- Create Domain for Intellicus application in WebLogic.
- Deploy the Intellicus in WebLogic as a Web Application.
- Start the Intellicus web application in WebLogic

Target Audience

This document is technical in nature and is written for users who have knowledge of the following:

- Linux administration.
- Web Logic Server Application Server administration.



Important: Intellicus web application can be deployed inside WEBLOGIC Server, whereas Intellicus Report Server always needs to be run separately.

Steps to deploy Intellicus application in WebLogic

The steps are as follows:

1. Download and place Intellicuswebapplication.tar.gz in WebLogic at <home folder>/bea/user_projects/domains/mydomain.
2. Decompress the file intellicuswebapplication.tar.gz.
3. Create Intellicus domain in WebLogic. [Click here](#) for Steps.
4. Deploy Intellicus application in the WebLogic domain.

Download Intellicus web application for WebLogic

Intellicus provides separate download of Intellicuswebapplication.tar.gz (name shall be followed by version). Contact Intellicus support to receive a link for that download. Unzip the gz after downloading it.

```
gunzip intellicuswebapplication.tar.gz
```

This will create intellicuswebapplication.tar.

To Create WebLogic Domain for Intellicus

Steps to create domain in WebLogic on Linux, Solaris and Windows platforms are:

Create Domain in Web Logic 8.1 on Linux & Solaris

Steps to create a domain for Intellicus in WebLogic while working through Console are given below. Click on directory `bea/weblogic81/common/bin` and run `config.sh`. The file runs in Console Mode.

Step 1: Create or Extend a Configuration

```
Create or Extend a Configuration:
-----
Choose between creating and extending a configuration. Based on your selection, the Configuration Wizard guides you through the steps to generate a new or extend an existing configuration.

->1|Create a new WebLogic configuration
  |   Start here to create a WebLogic configuration in your projects directory.

 2|Extend an existing WebLogic configuration
  |   Start here to extend an existing WebLogic configuration. Use this option to add applications and services,
  | including Database access (JDBC) and Messaging (JMS). This option also enables you to extend functionality by enabling
  | WebLogic Workshop.

Enter index number to select OR [Exit][Next]> 1
```

Figure 1: Create or Extend a Configuration

Selects option **Create a new WebLogic configuration**. Specify **point 1** and press **Enter** key.

Step 2: Select a Domain Template

```
Select a Domain Template:
-----

Please select a template from the list or select another directory of templates.

  * [/root/bea/weblogic81/common/templates/domains]

1|WebLogic Server Examples Domain 8.1.4.0
  | BEA Systems, Inc.
  | Create the WebLogic Server Examples domain in a directory outside of the installed kit. The Examples domain contains
  | a collection of examples to show best practices for coding individual J2EE APIs.

->2|Basic WebLogic Server Domain 8.1.4.0
  | BEA Systems, Inc.
  | Create a basic WebLogic Server domain without installing sample applications.

3|Basic WebLogic Workshop Domain 8.1.4.0
  | BEA Systems, Inc.
  | Create a basic WebLogic Workshop domain, without installing sample applications. Domains created from this template
  | will support the WebLogic Server and WebLogic Workshop runtime functionality, including support for J2EE applications,
  | Web applications, Web Services and custom controls. Use domains created from this template for development of WebLogic
  | Workshop applications.

4|Avitek Medical Records Sample Domain 8.1.4.0
  | BEA Systems, Inc.
  | Create the Avitek Medical Records domain in a directory outside of the installed kit. The Avitek Medical Records is
  | a WebLogic Server sample application suite that concisely demonstrates all aspects of the J2EE platform.

5|Select another directory location

Enter index number to select OR [Exit][Previous][Next]> 2
```

Figure 2: Select a Domain Template

Select option **Basic WebLogic Server Domain**. Specify point 2 and press **Enter** key.

Step 3: Choose Configuration Option

```
Choose Configuration Option:
-----

  *Do you want to run the wizard in express mode?

->1|Yes

  2|No

Enter index number to select OR [Exit][Previous][Next]> 1
```

Figure 3: Choose Configuration Option

Select **Yes** to run the wizard in express mode. Specify point 1 and press **Enter** key.

Step 4: Configure Administrative User name and User password

```
Configure Administrative Username and Password:
-----

Create a user automatically assigned to the Administrative Role. This user is the default administrator used to start development mode servers.

|          Name          |          Value          |
|-----|-----|
1| *User name:           | weblogic                |
2| *User password:       |                          |
3| *Confirm user password: |                          |
4| Description:           | The default administration user |

Enter value for "User name" OR [Exit][Previous][Next]> weblogic
```

Figure 4: Administrative Username and Password

The steps are listed below:

1. Specify 1 and press enter key to select **User name** option.
2. Specify the User name and press **Enter** key.
3. Specify 2 and press **Enter** key to select **user password** option.
4. Specify the user password and press **Enter** key.
5. Specify 3 and press **Enter** to select **confirm user password** option.
6. Enter the same password that use entered earlier and press **Enter** key.
7. Go to the next step after specifying n and press **Enter** key.

Step 5: Domain Mode Configuration

```
Domain Mode Configuration:
-----

Enable Development or Production Mode for this domain.

->1|Development Mode
   2|Production Mode

Enter index number to select OR [Exit][Previous][Next]> 2
```

Figure 5: Domain Mode Configuration

Specify 2 and press **Enter** key to select **Production Mode**.

Step 6: Java SDK Selection

```
Java SDK Selection:
-----
->1|JRockit SDK 1.4.2_05-8140 @ /root/bea/jrockit81sp4_142_05
  2|Sun SDK 1.4.2_05 @ /root/bea/jdk142_05
  3|Other Java SDK

Enter index number to select OR [Exit][Previous][Next]> 2
```

Figure 6: Java SDK Selection

Select **2** and press **Enter** key to select **Sun SDK 1.4.2_05 @/root/bea/jdk1420_05**

Step 7: Select the target domain directory for this configuration

```
Select the target domain directory for this configuration:
-----

"Target Location" = [/root/bea/user_projects/domains]

Input new Target Location OR [Exit][Previous][Next]> /root/bea/user_projects/domains/intellicus
```

Figure 7: Target Domain Directory

Specify the path and press **Enter** key to mention the path where that extracted Intellicus web application will be placed.

Step 8: Edit Domain Information

```

Edit Domain Information:
-----
| Name | Value |
|-----|-----|
1| *Name: | mydomain |

Enter value for "Name" OR [Exit] [Previous] [Next] >

Edit Domain Information:
-----
| Name | Value |
|-----|-----|
1| *Name: | 1 |

Select Option:
1 - Modify "Name"
2 - Discard Changes

Enter option number to select OR [Exit] [Previous] [Next] >

```

Figure 8: Domain Information

Specify name of the domain. The steps are listed below:

1. Specify 1 and press **Enter** key to choose to specify name.
2. Press **Enter** key after specifying name.
3. Specify 1 and press **Enter** key to modify name (accept the change in the name),
4. Go to the next step after specifying n and press **Enter** key.

Domain is created.

```

Creating Domain...

0%          25%          50%          75%          100%
[-----|-----|-----|-----]
[*****]

**** Domain Created Successfully! ****

linux:~/bea/weblogic81/common/bin #

```

Figure 9: Domain is created

Step 9: Extract Intellicus web application files into WebLogic Domain

Extract the contents from the file intellicuswebapplication.tar to the /root/bea/user_projects/domain/intellicus folder.

```
tar -xvf intellicuswebapplication.tar
```

This will extract the Intellicus web application files.

[Click here](#) to go to step to Start Intellicus Application in WebLogic.

To Create WebLogic Domain on Windows

Step 1: Create a new Configuration

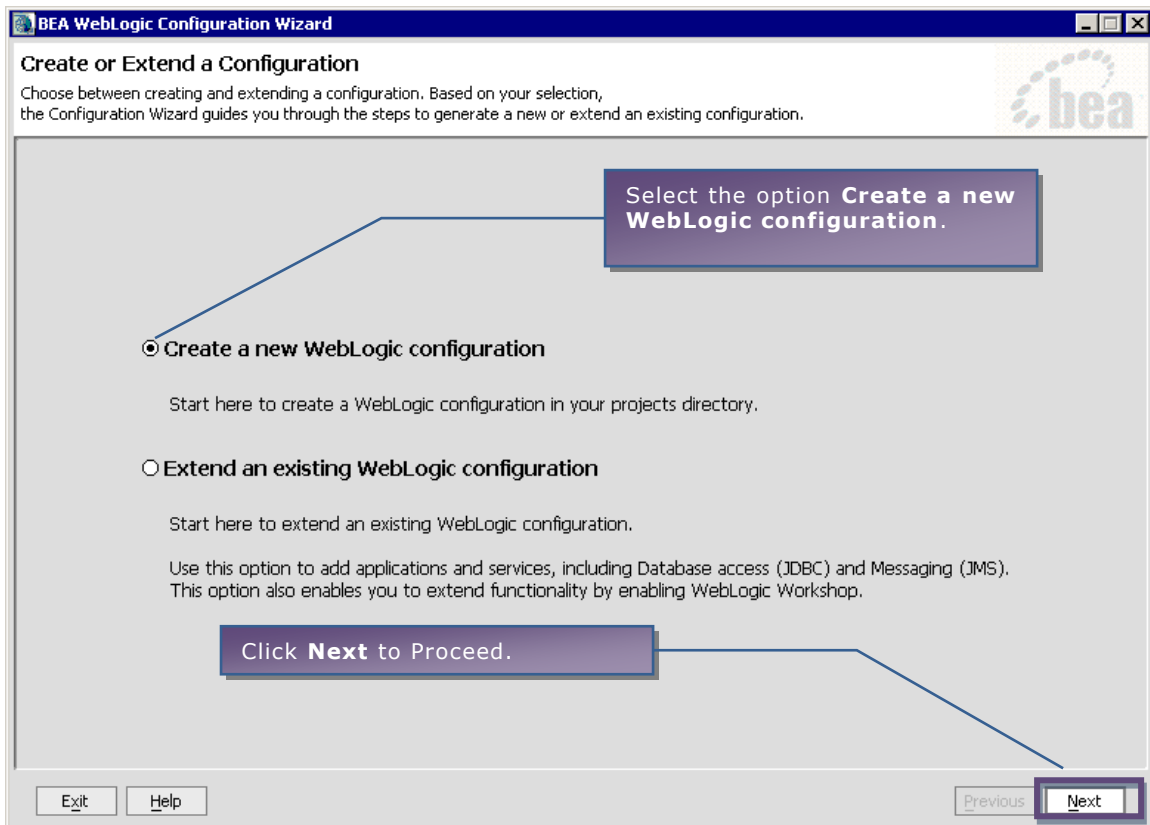


Figure 10: Create or Extend a Configuration

Step 2: Select a Configuration Template

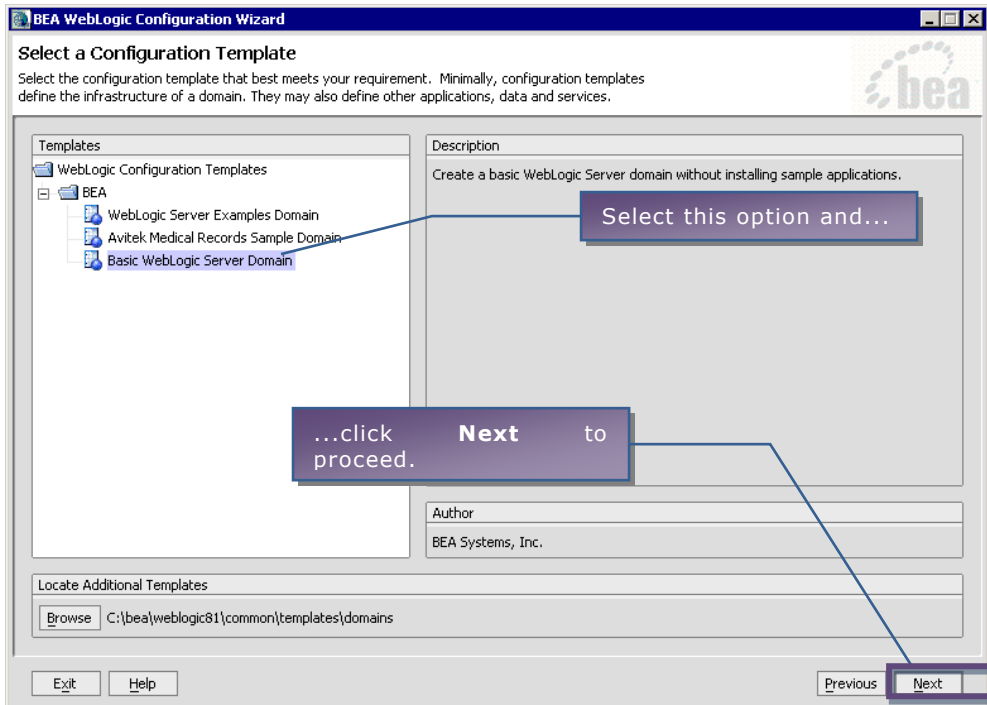


Figure 11: Select a Configuration Template

Step 3: Choose Express Configuration

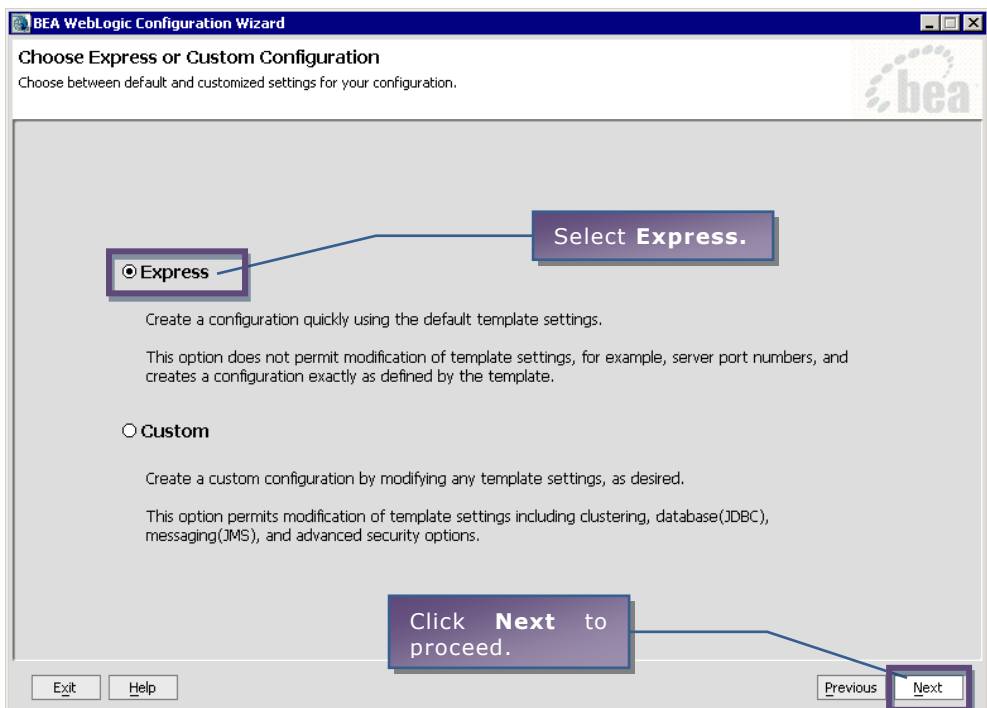


Figure 12: Choose Express or Custom Configuration

Step 4: Configure Admin Username and Password

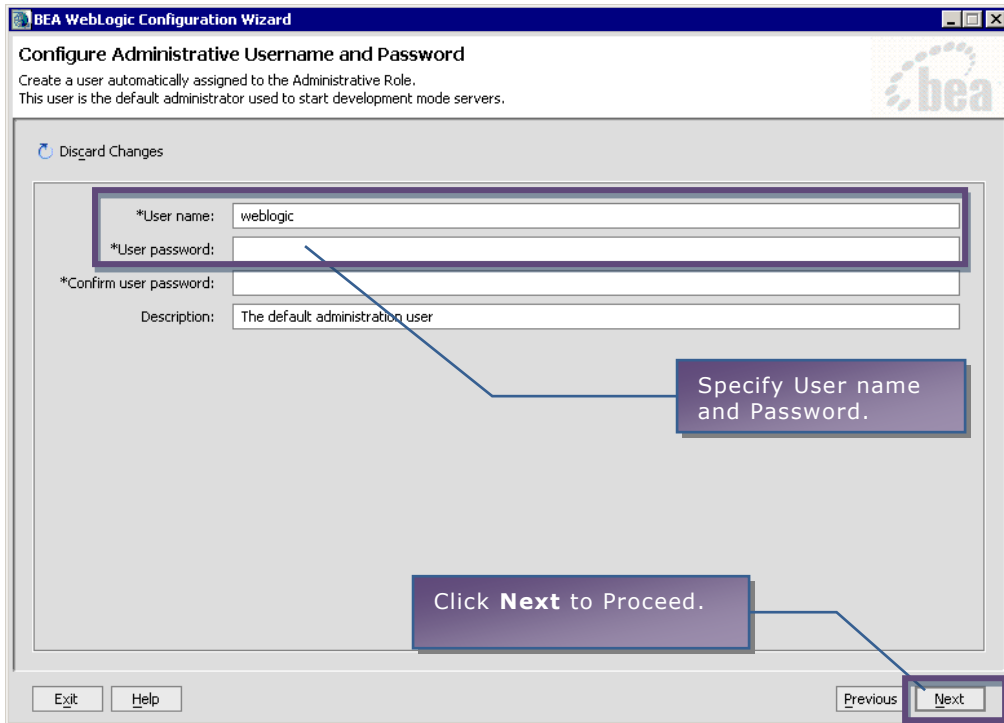


Figure 13: Configure Administrative Username and Password

Step 5: Configure Server Start Mode and Java SDK

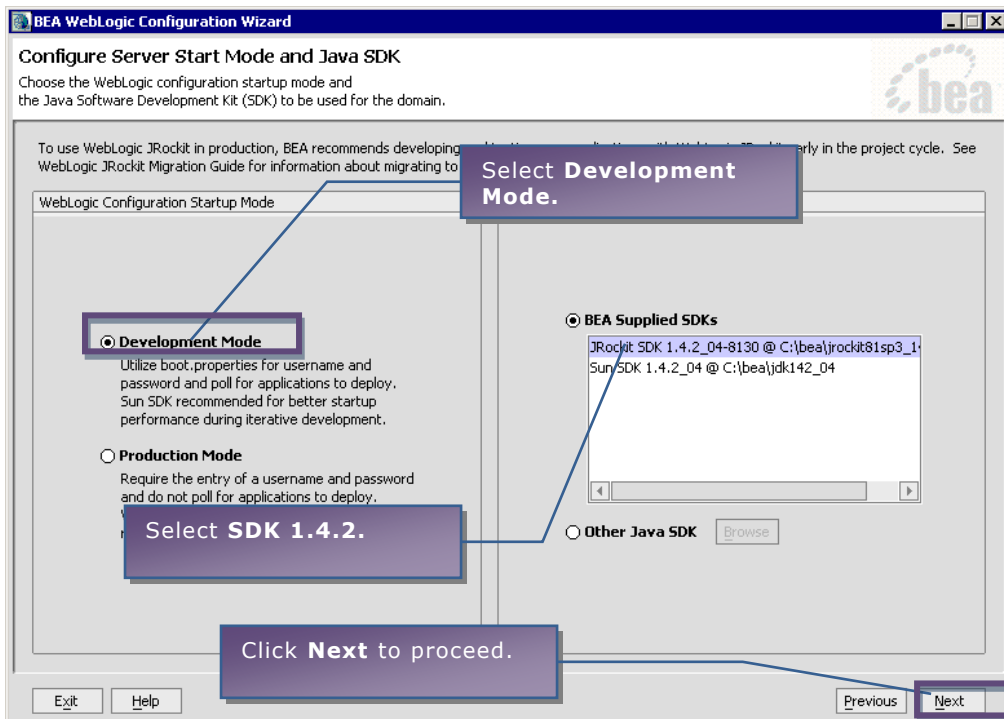


Figure 14: Configure Server Start Mode and Java SDK

Step 6: Configuration Summary

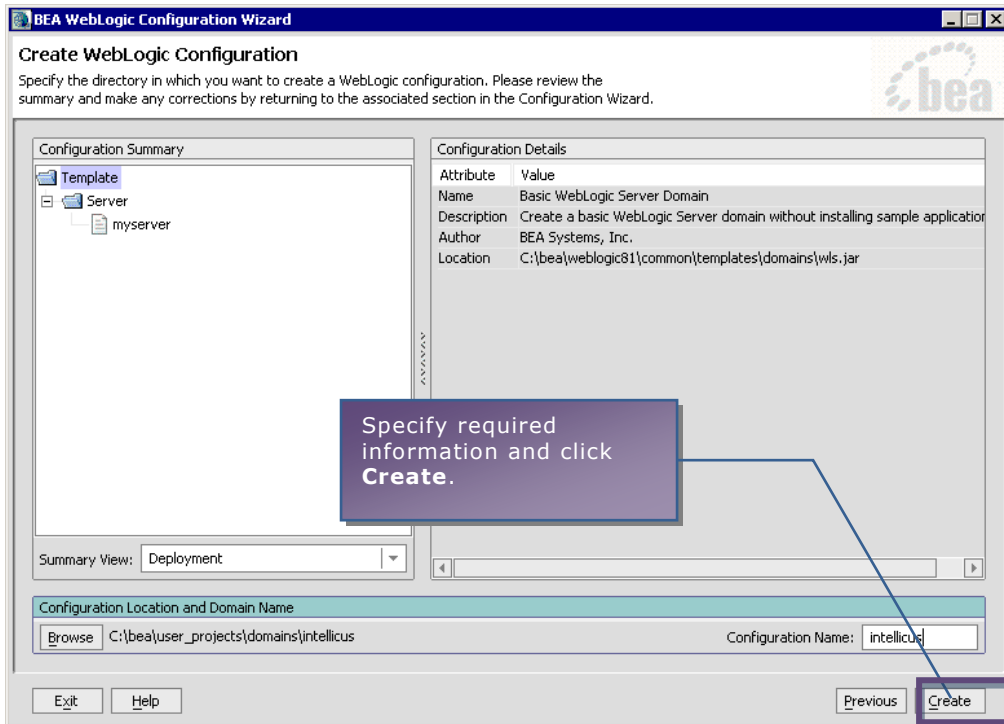


Figure 15: Create WebLogic Configuration

Step 7: Final step

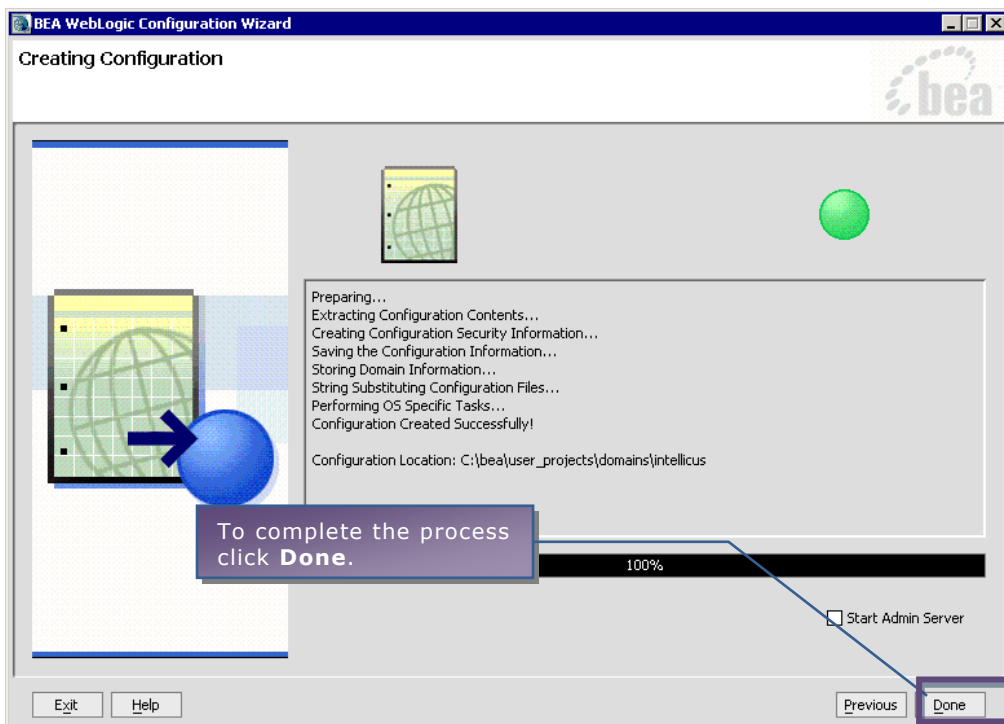


Figure 16: Creating Configuration – The final step

To deploy Intellicus as Web Application

This activity is done on the web interface of WebLogic Admin Console. To get WebLogic Admin Console, specify the following URL in the browser window:

```
http://<IP of the weblogic server>:<port>/console/
```

Step 1. Web Application Modules Screen

From the tree structure appearing on the left, click **Deployments > Web Application Modules**. Following screen appears:

The screenshot shows the WebLogic Admin Console interface. On the left, a tree structure lists various components, with 'Web Application Modules' selected. The main content area displays the 'Configuration' tab for a web application. It includes a description of web application modules and a table listing the currently deployed modules. A callout box points to the 'Deploy a new Web Application Module...' link, and another callout box points to the table.

Name	Deployment Type	Context Root	Deployment Order	
_appsdir_intellicus_dir	Web Application	n/a	100	
_appsdir_intellicus_old_dir	Web Application	n/a	100	

Figure 17: Start from this page.

Step 2. Deploy a Web Application module Screen

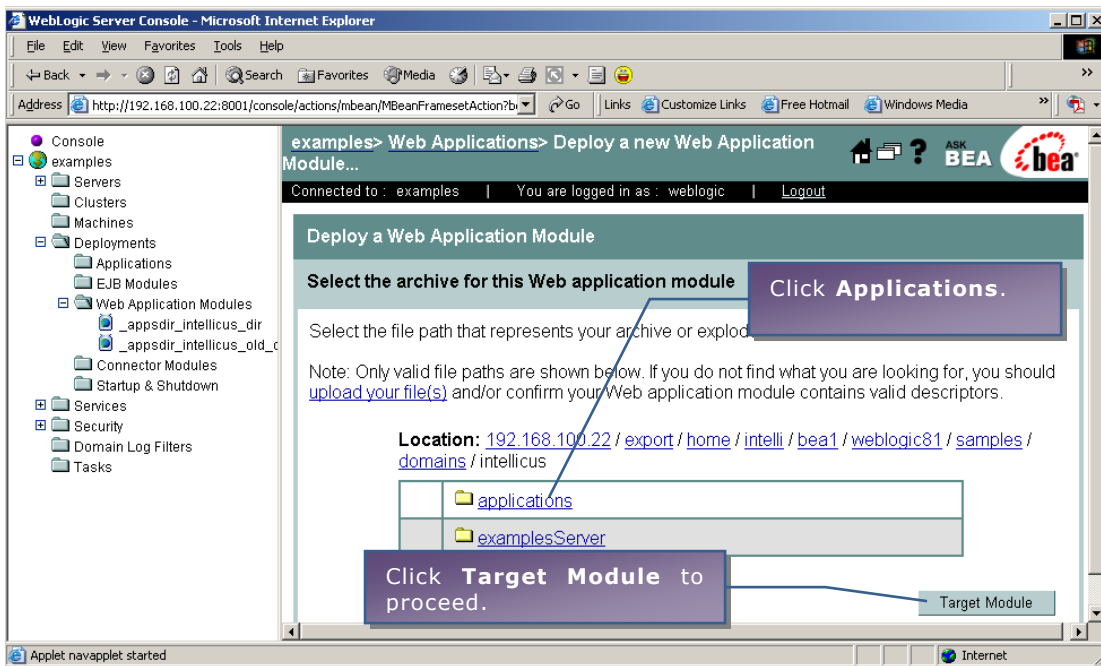


Figure 18: Select applications option.

Step 3. Select the archive

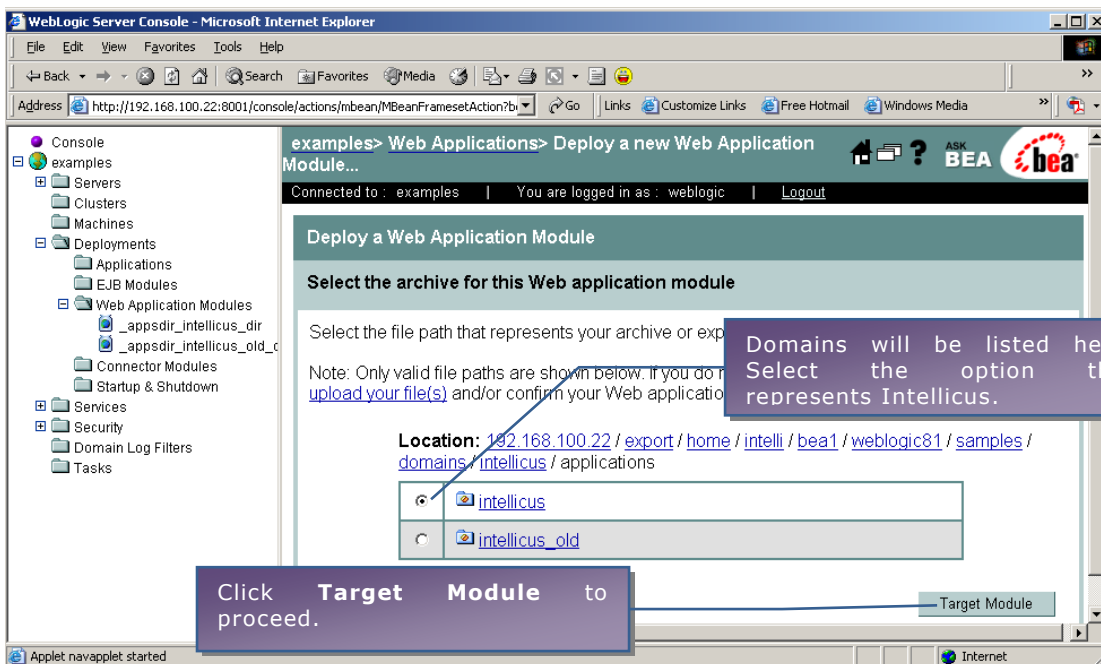


Figure 19: Select IntelliCus application

Step 4. Select target for application module

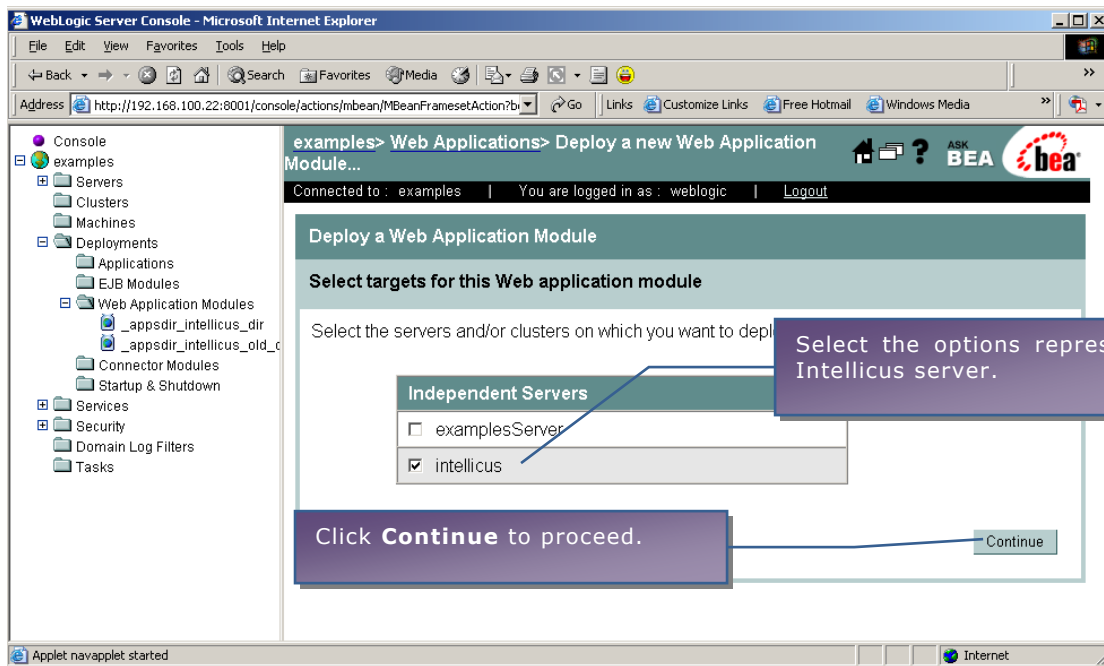


Figure 20: Selecting the server

Step 5. Complete application creation

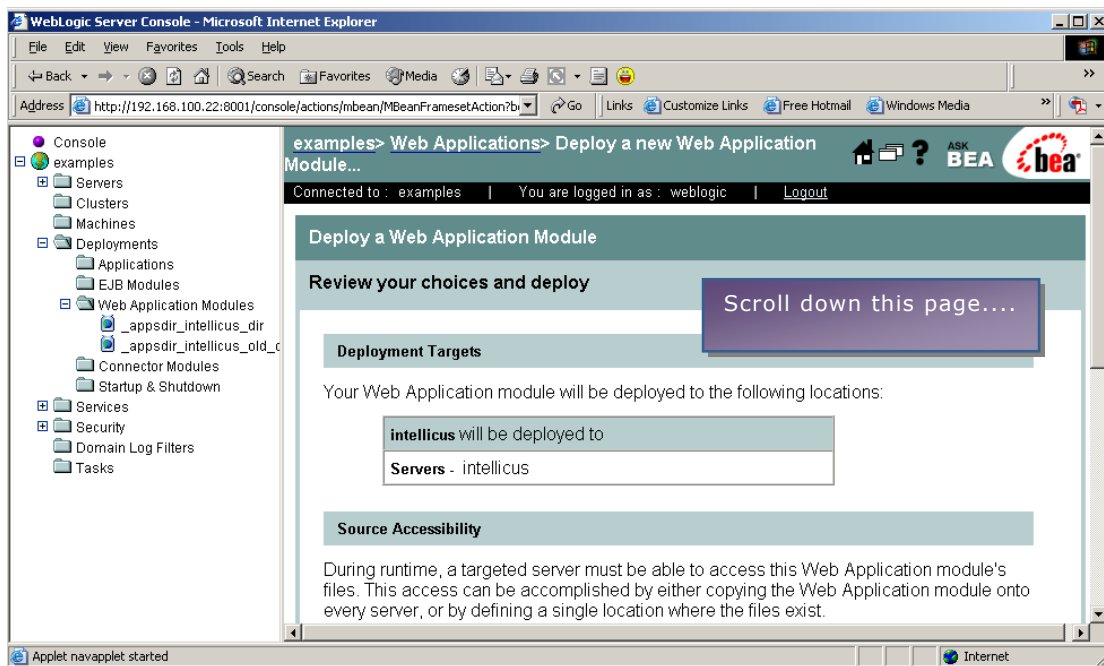


Figure 21: This page will appear.

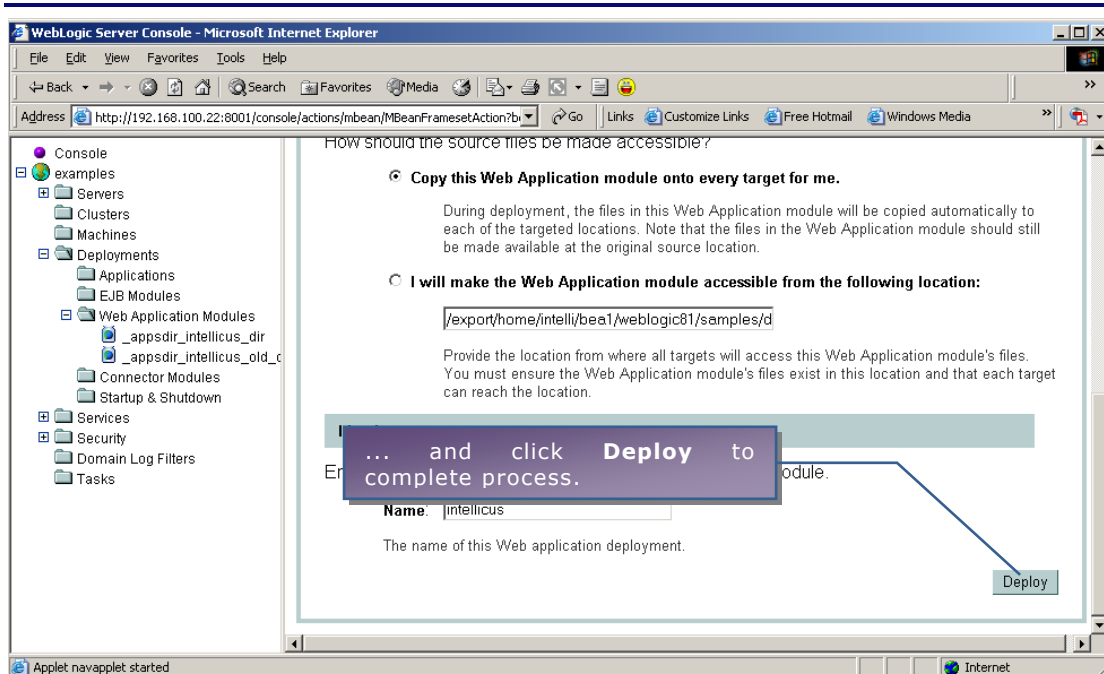


Figure 22: Click Deploy.

Intellicus Web-based Reporting suite is deployed and is ready for use.

Run the startWebLogic.sh located at

<home folder>/bea/user_projects/domains/mydomain.

```
./startWebLogic.sh
```

To start the Intellicus Web-based Reporting Suite

Launch the browser and in specify the following URL in its address bar:

```
http://<IP of the Webserver>:<Port>/Intellicus
```

Replace <IP of the Webserver> with the actual IP. Replace <Port> with the actual Port. For example, http://120.98.99.256:7001/Intellicus.

If user has changed the Webserver port, specify the following URL:

```
http://<IP of the webserver:port number>/intellicus.
```

For example, if the changed port number is 7000, the URL would be: http://120.98.99.256:7000/Intellicus .

Logging into Intellicus web-based Reporting Suite

Intellicus needs following information to log user on:

Login Name: Admin
Password: Admin
Organization Name: Intellica

Click **Login** after providing the above mentioned information.

To Stop the ReportServer

Run the file shutdown.sh located at path <home folder>/intellicus/reportengine/bin to stop the ReportServer.

```
./shutdown.sh
```

To Stop the Web Server

Run the stopWebLogic.sh located at <home folder>/bea/user_projects/domains/mydomain to stop the Webserver.

```
./stopWebLogic.sh
```

To change the Listener Port

Default port set in the config.xml is 7001. To change the port for Intellicus application, follow the steps:

1. Go to the folder where the domain was created.
2. Open file config.xml and change port number within **ListenerPort** tag.
3. Change the value and save the file.

