

# Deploying Intellicus Portal on IBM WebSphere

---

Intellicus Enterprise Reporting and BI Platform



©Intellicus Technologies  
info@intellicus.com  
www.intellicus.com

---

Copyright © **2010** Intellicus Technologies

This document and its content is copyrighted material of Intellicus Technologies. The content may not be copied or derived from, through any means, in parts or in whole, without a prior written permission from Intellicus Technologies. All other product names are believed to be registered trademarks of the respective companies.

**Dated: - December 2010.**

## **Acknowledgements**

Intellicus acknowledges using of third-party libraries to extend support to the functionalities that they provide.

For details, visit: <http://www.intellicus.com/acknowledgements.htm> .

---

**Contents**

---

<b>Deploying Intellicus web application in IBM WebSphere .....</b>	<b>4</b>
Deploying Intellicus web application using WAR file .....	4
Download Intellicus web application .....	4
Installing Intellicus (using WAR file) .....	5
Deploying Intellicus using EAR file.....	13
Installing Intellicus .....	14
Unzip Client.zip folder .....	19
Setting path of ReportClient.properties .....	20

---

# Deploying Intellicus web application in IBM WebSphere

---

The chapter provides instructions to deploy Intellicus in IBM WebSphere using:

- Intellicus WAR file
- Intellicus EAR file

## Target Audience

This document is technical in nature and is written for users who have knowledge in following:

- IBM WebSphere Application Server administration.



**Important:** Intellicus web application can be deployed inside WebSphere Server, whereas Intellicus Report Server always needs to be run separately.

## Deploying Intellicus web application using WAR file

### Steps to deploy Intellicus application in WebSphere

The steps are as follows:

- Download and place intellicuswebapplication.tar.gz.
- Decompress the file intellicuswebapplication.tar.gz

### Download Intellicus web application

#### For Solaris / Linux / AIX

Intellicus provides separate download of intellicuswebapplication.tar.gz (name shall be followed by version). Contact Intellicus support to receive a link for that download. Unzip the gz after downloading it.

```
gunzip intellicuswebapplication.tar.gz
```

This will create intellicuswebapplication.tar.

#### For Windows

For Windows installation, Intellicus.war is included in setup.exe (Intellicus setup file). This is stored in /intellicus/API folder.

---

## Installing Intellicus (using WAR file)

This activity is done on the web interface of WebSphere Admin Console. To get WebSphere Admin Console, specify URL where IBM WebSphere application server is running. Following page appears:

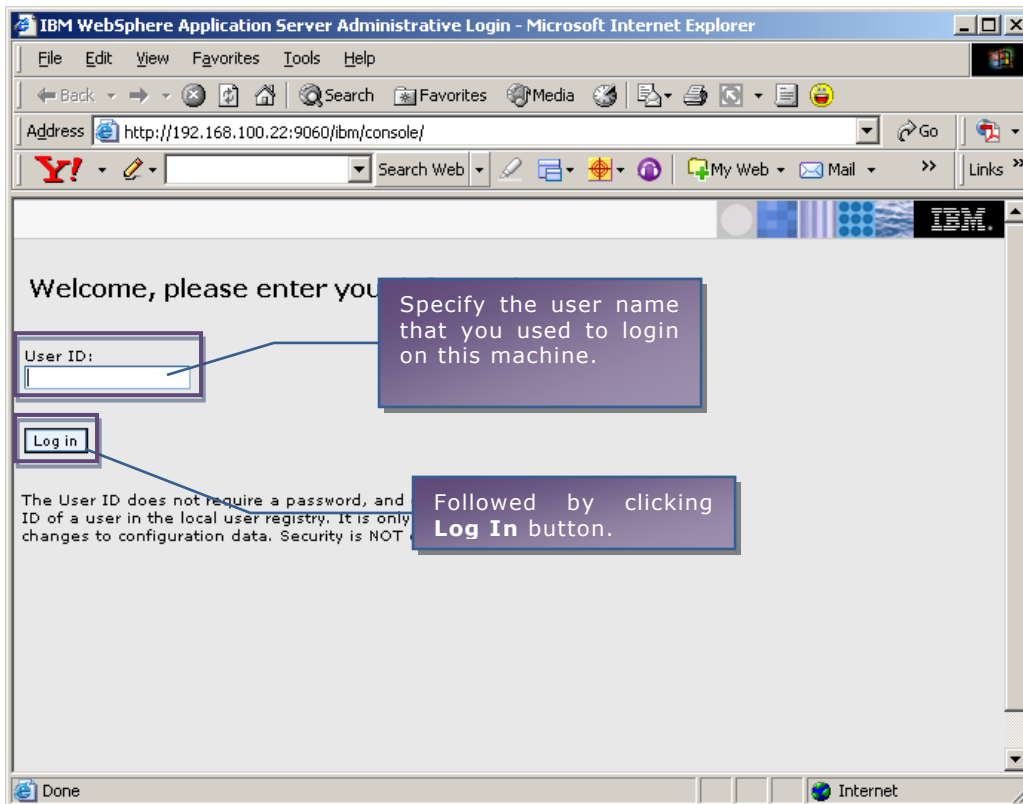


Figure 1: Specify login information

Specify User ID and click **Log in**. This is the name that you used to login on this machine.

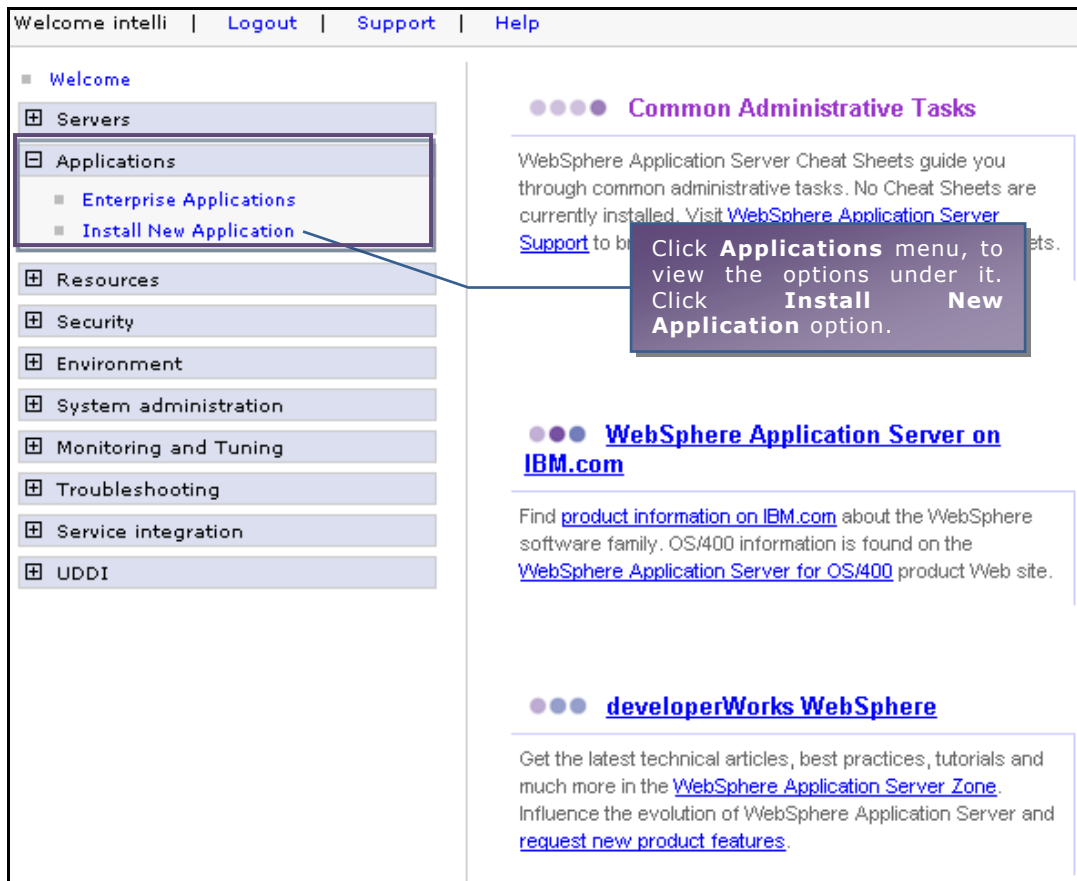


Figure 2: Installing new application

Select **Applications** menu from the menu on the Welcome Page. It expands and displays two options. Select **Install New Application** option.

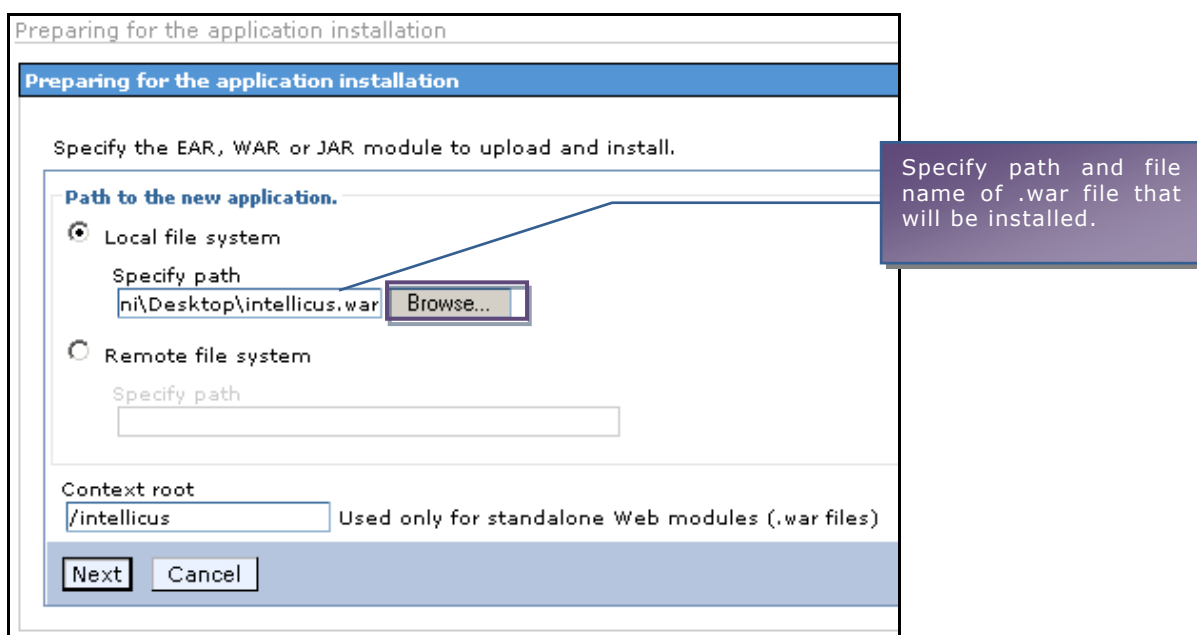


Figure 3: Specifying path and name of war file

On the page that appears on the right pane, specify the path where war file sent by Intellicus is located.

For **Context root**, specify /Intellicus. Click **Next**.

Preparing for the application installation

Choose to generate default bindings and mappings.

Generate Default Bindings

**Override:**

Do not override existing bindings

Override existing bindings

**Virtual Host**

Do not use default virtual host name for Web modules

Use default virtual host name for Web modules:

Host name  
default\_host

Specific bindings file  
 Browse...

Previous Next Cancel

Make sure this option is selected.

Figure 4: Default binding and mappings

Under **Override**, make sure **Do not override existing bindings** is selected. Under **Virtual Host**, select option **Do not use default virtual host name for Web modules**. Click **Next** to proceed.

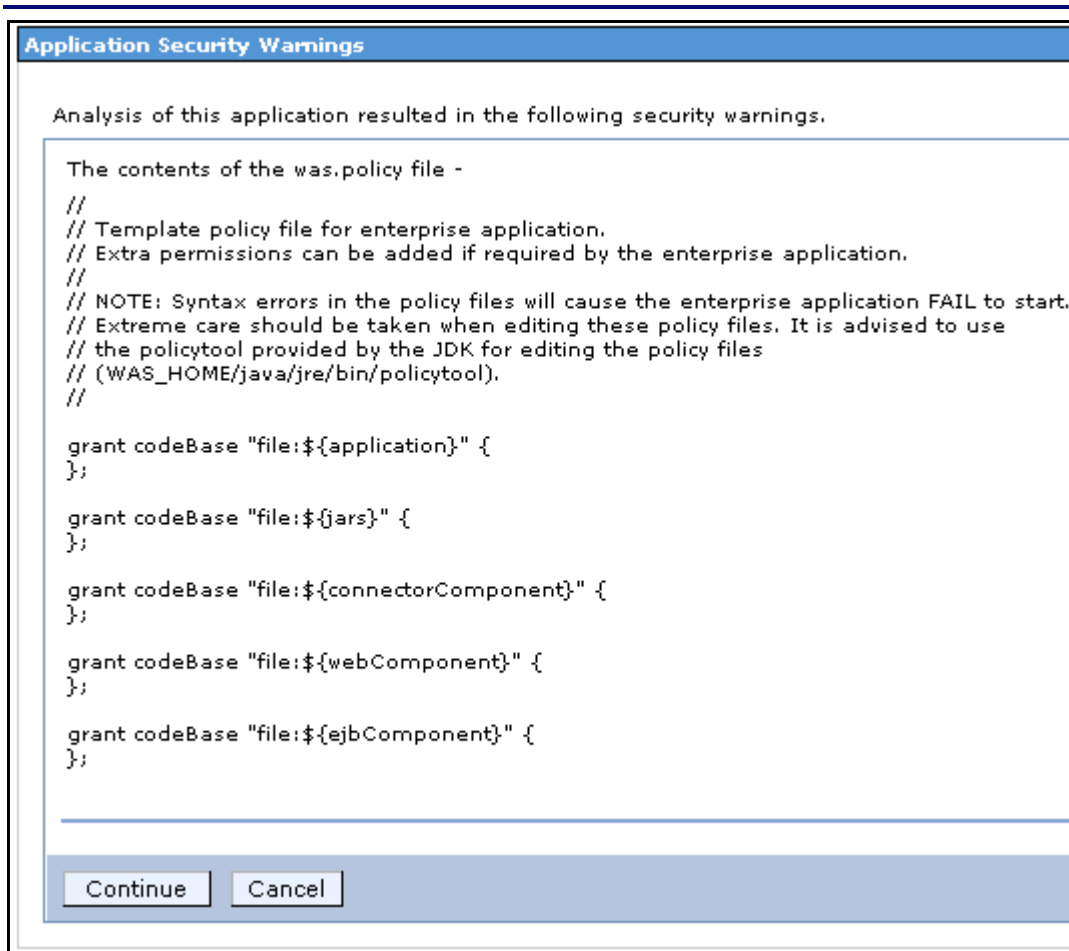


Figure 5: Application Security Warnings

Click **Continue** to proceed.



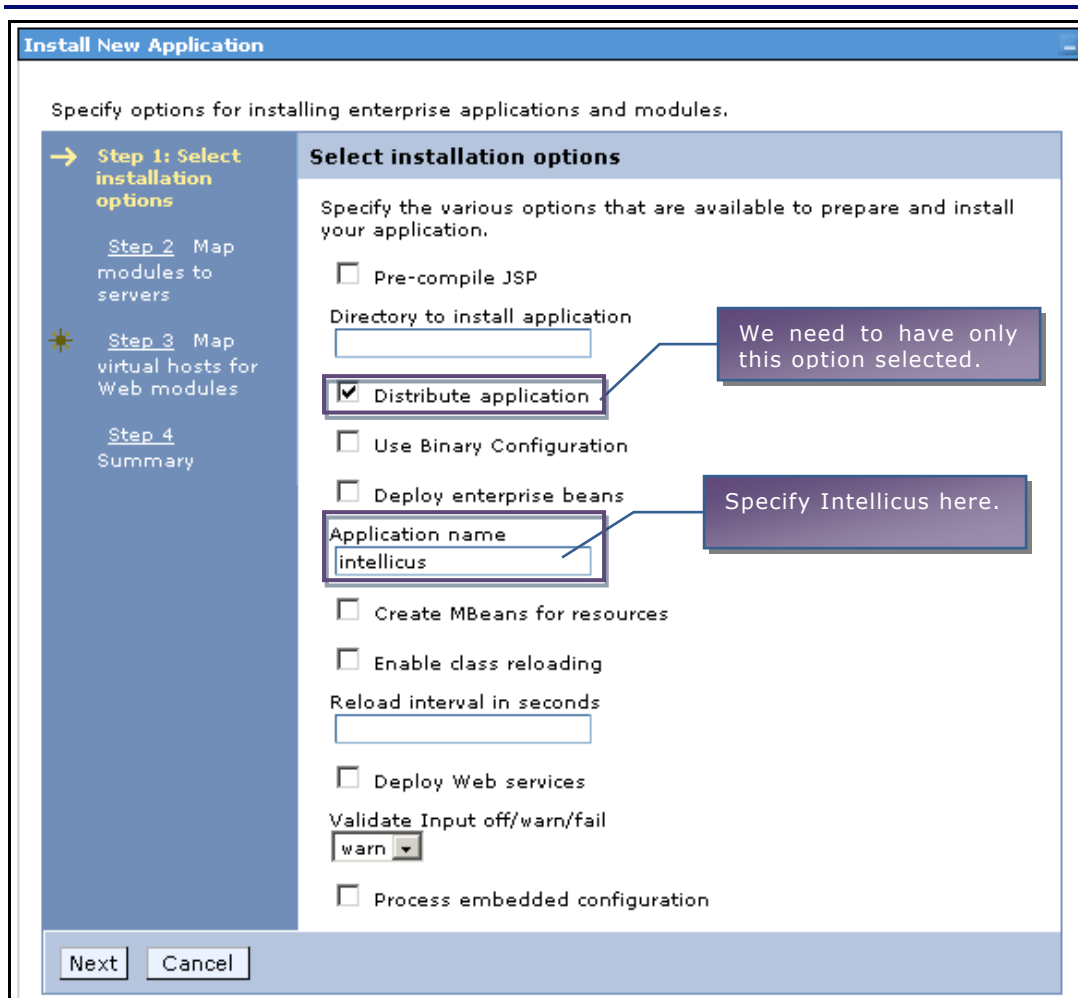


Figure 6: Selecting installation options

Make sure only the option **Distribute application** is selected. Click **Next** to proceed.

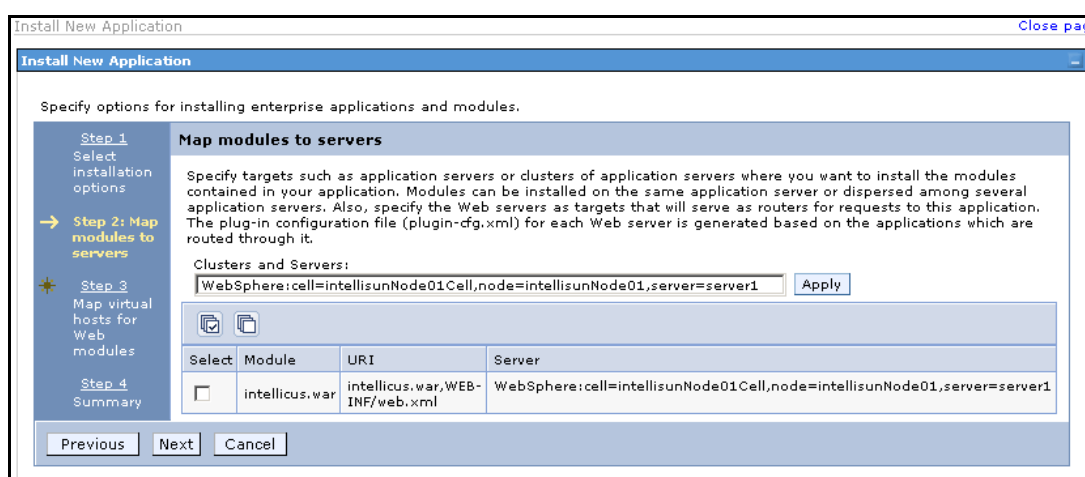


Figure 7: Mapping modifiers to servers

Click **Next** to proceed. If another options appear on the same page, you may ignore them.

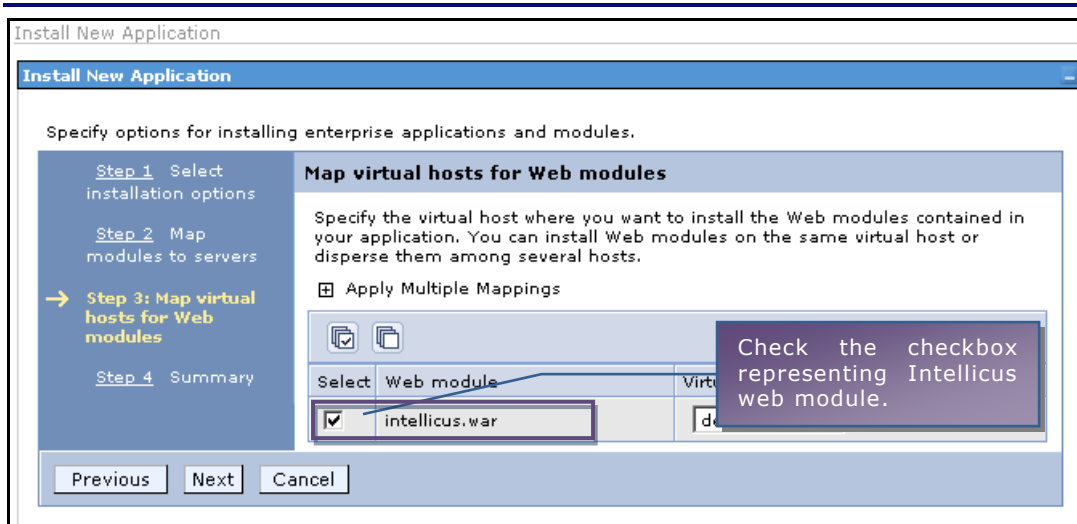


Figure 8: Mapping virtual hosts for Web modules

Select **intellicus.war** and click **Next** to proceed.

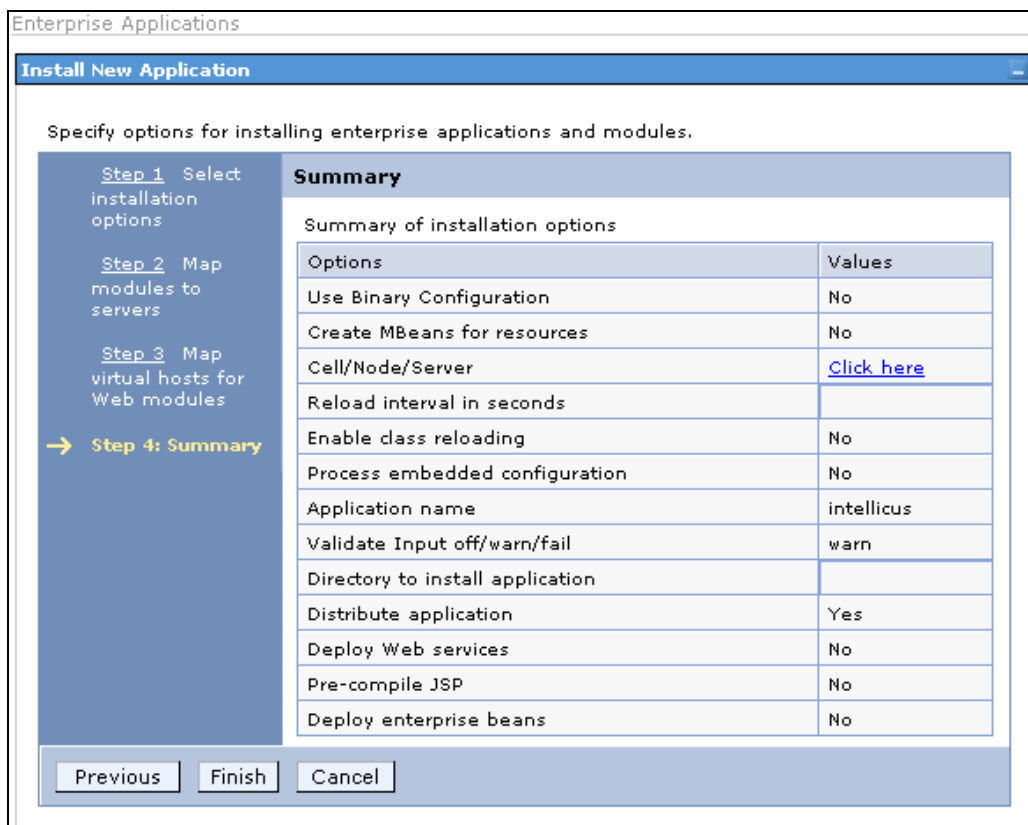


Figure 9: View summary and click Finish to go ahead

Click **Finish** to proceed.

## Installing...

**If there are enterprise beans in the application, the EJB deployment process can take several minutes to complete. The application configuration is not saved until the process completes.**

Check the SystemOut.log on the Deployment Manager or server where the application is deployed for messages during the deployment process as it occurs.

ADMA5016I: Installation of intellicus started.

ADMA5067I: Resource validation for application intellicus completed successfully.

ADMA5058I: Application and module versions validated with versions of deployment targets.

ADMA5005I: The application intellicus is configured in the WebSphere Application Server repository.

ADMA5053I: The library references for the installed optional package are created.

ADMA5005I: The application intellicus is configured in the WebSphere Application Server repository.

ADMA5001I: The application binaries are saved in /export/home/intelli/AppServer/profiles/default/wstemp/1958057171/workspace/cells/intellisunNode

Figure 10: Messages appearing

Above page will appear.

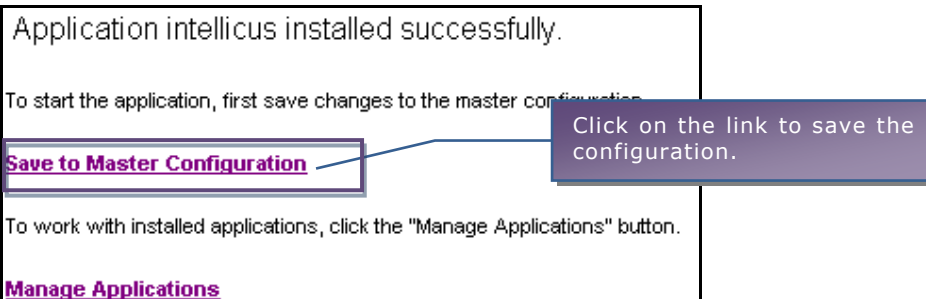


Figure 11: Click Save to Master Configuration link

Click the link **Save to Master Configuration**.

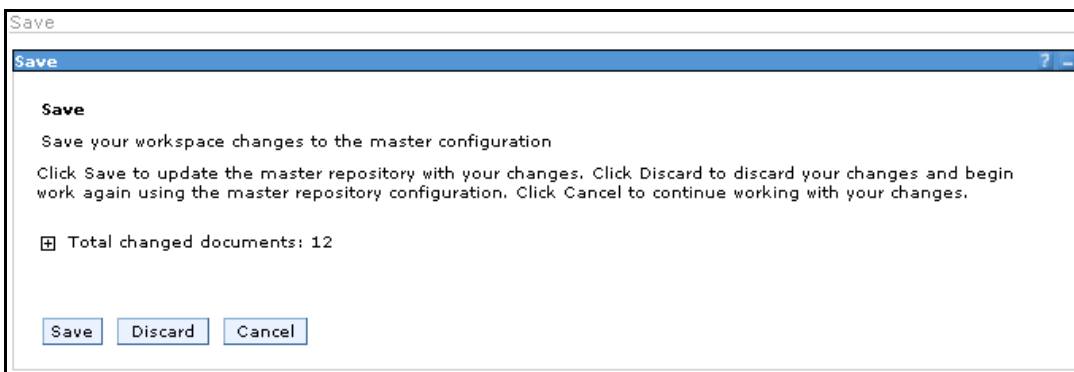


Figure 12: Click Save

Click **Save** to complete the work.

From **Enterprise Applications** page of WebSphere Administration Console, start Intellicus application.

---

## To launch the Intellicus Web-based Reporting Suite

Launch the browser and specify the following URL in its address bar:

```
http:// <IP of the webserver>:9080/intellicus/index.jsp
```

Replace <IP of the Webserver> with the actual IP.



**Important:** Appending index.jsp in the URL is mandatory.

## Logging into Intellicus web-based Reporting Suite

Intellicus needs following information to log user on:

Login Name: Admin

Password: Admin

Organization Name: Intellica

Click **Login** after providing information mentioned above.

---

## Deploying Intellicus using EAR file

Intellicus web-based reporting solution can be deployed on most of the popular web servers. This document explains how to deploy Intellicus web component on IBM WebSphere 6.1.

Intellicus web component has all the portal related files organized in a folder structure and shipped as an EAR file. This also includes files like property files and log files. Client folder (which has property files) can be kept outside Intellicus folder at any location, so that they can be managed from outside the web server.

The process of deploying Intellicus web component in IBM WebSphere 6.1 involves following activities:

### 1. Installing Intellicus web application

Intellicus\_ws.ear contains following files:

- intellicus.war (Intellicus web component archive)
- META-INF folder having application.xml, ibm-application-bnd.xmi, MANIFEST.MF and was.policy

### 2. Unzip Client.zip to get the Client folder structure

This file contains a folder structure having property files and other run time folders.

By taking this structure out of Intellicus portal component folders, you can manually change property values from this location.



**Note:** Folder arrangement or file placement inside client folder should not be modified.

### 3. Setting property file path

This involves, specifying property file name and path in JVM configuration of WebSphere.

## Installing Intellicus

Here are the steps to install Intellicus portal component in WebSphere 6.1.

You will need intellicus\_ws.ear file to install Intellicus web component. This file is placed in APIs folder where Intellicus setup was run.

You can also download intellicus\_ws.ear from Intellicus web site. In case of difficulties, contact your vendor support.

In a browser, open IBM WebSphere console and login as Administrator.

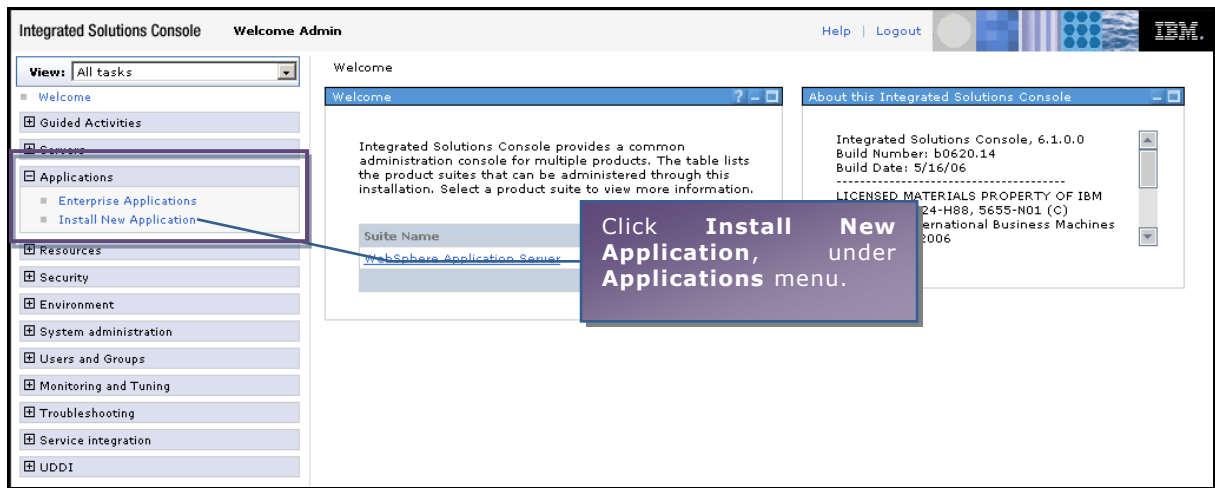


Figure 13

Preparing for the application installation page will appear.

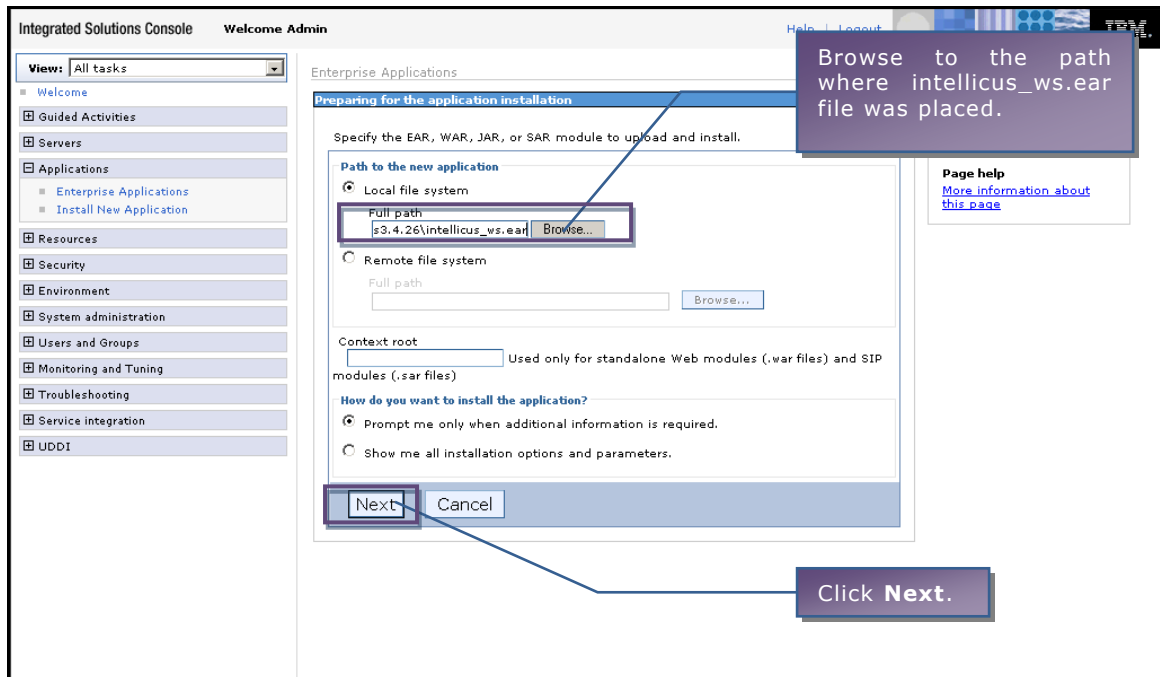


Figure 14

Install New Application page will appear.

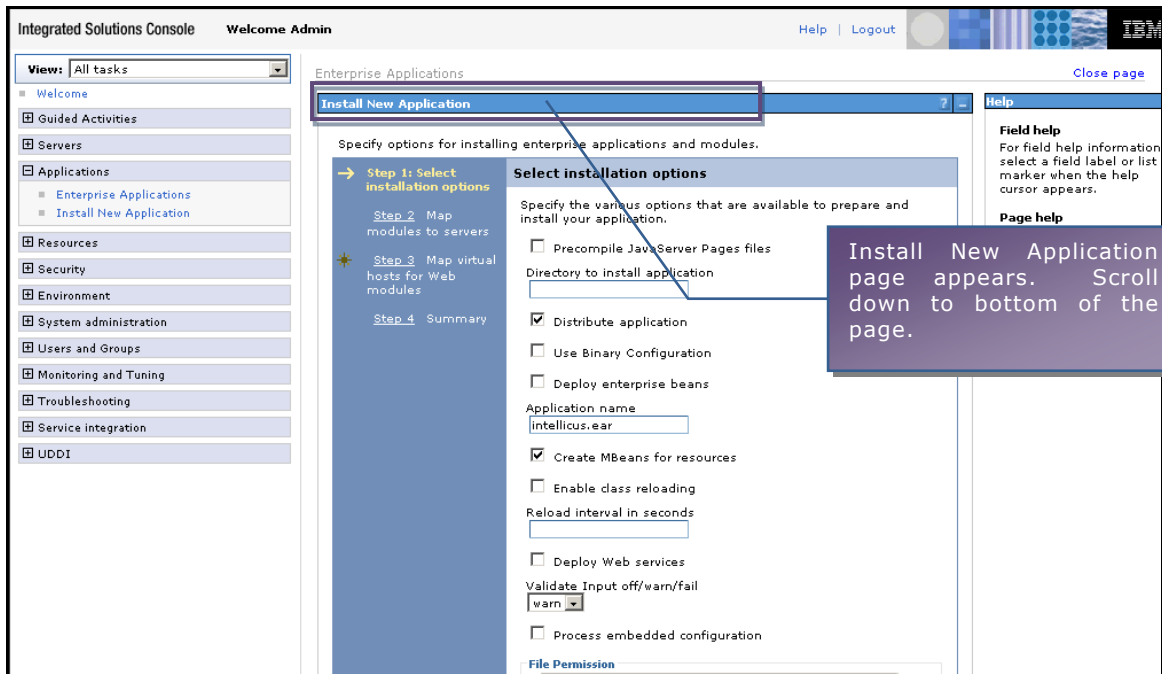


Figure 15

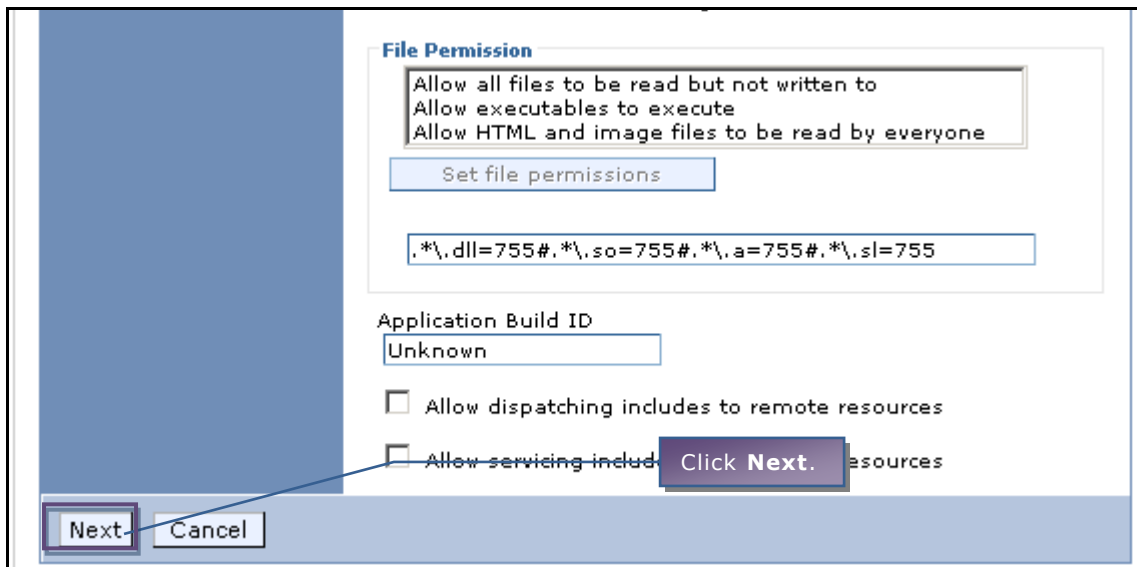


Figure 16

Install New Application's **Step 2** appears.

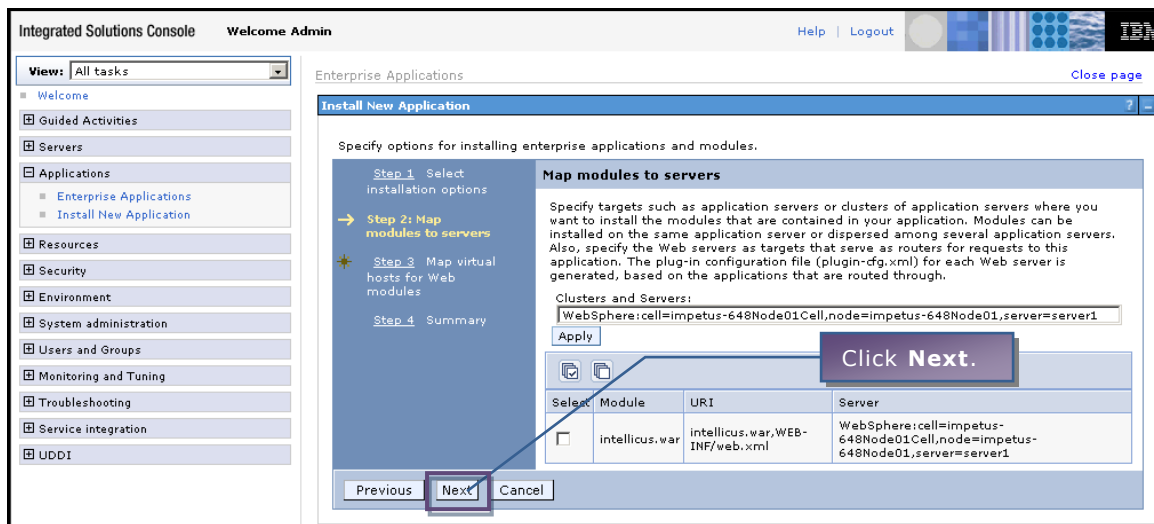


Figure 17

Install New Application's **Step 3** appears.

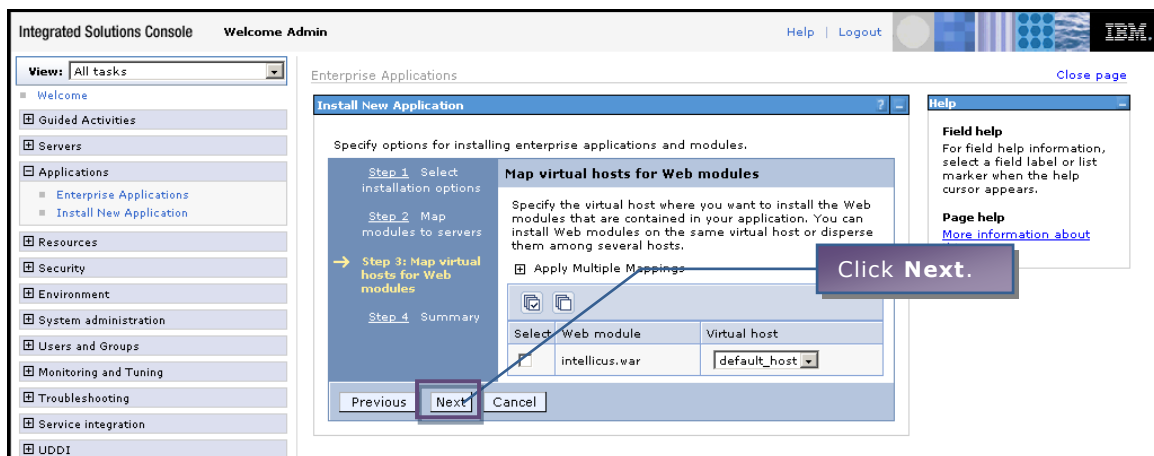


Figure 18

Install New Application's **Step 4** appears.



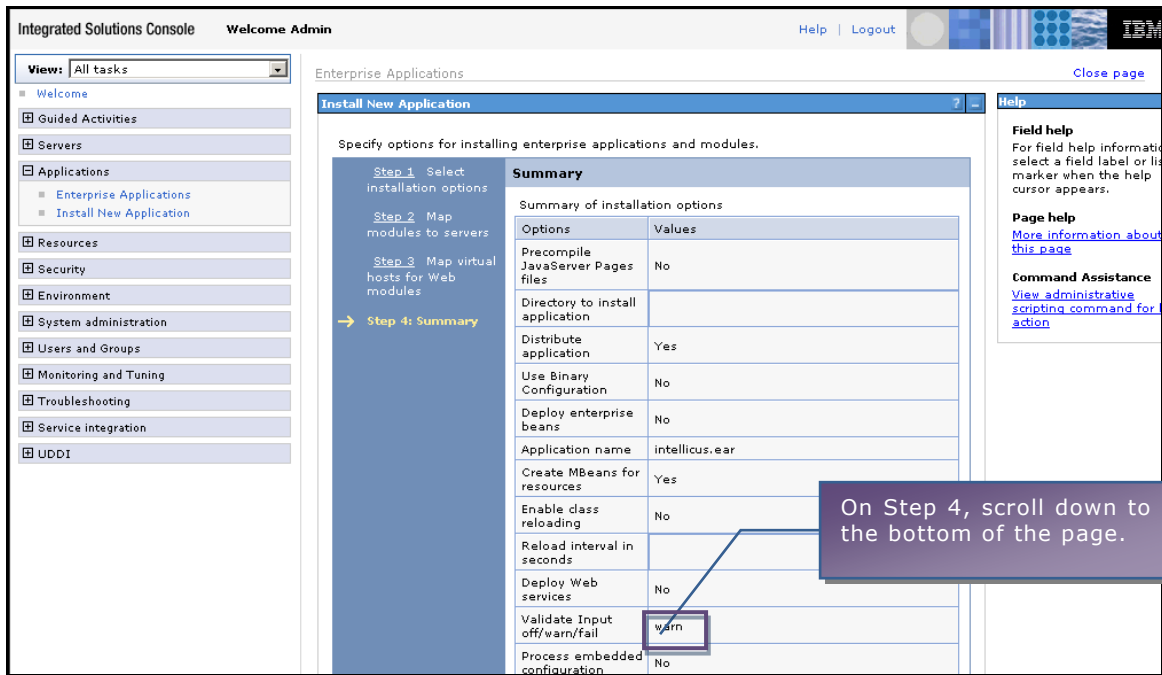


Figure 19

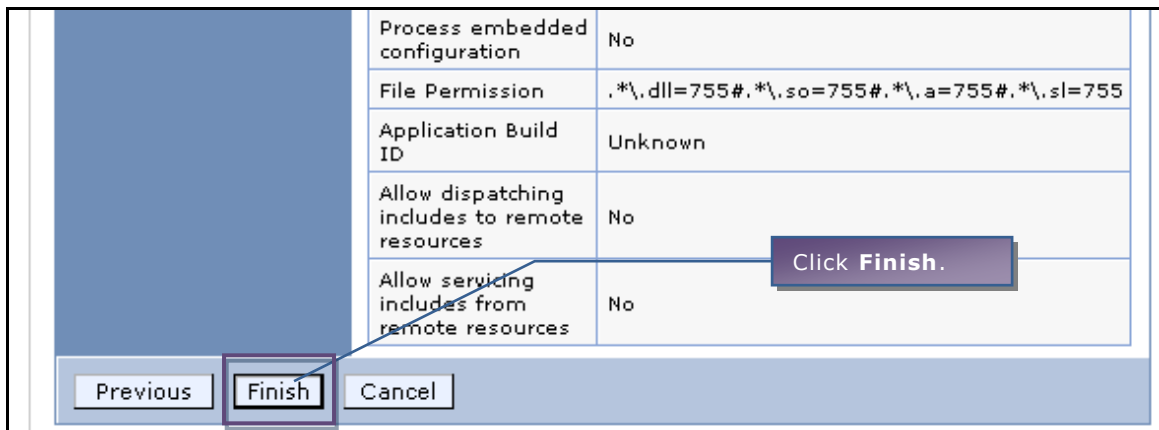


Figure 20

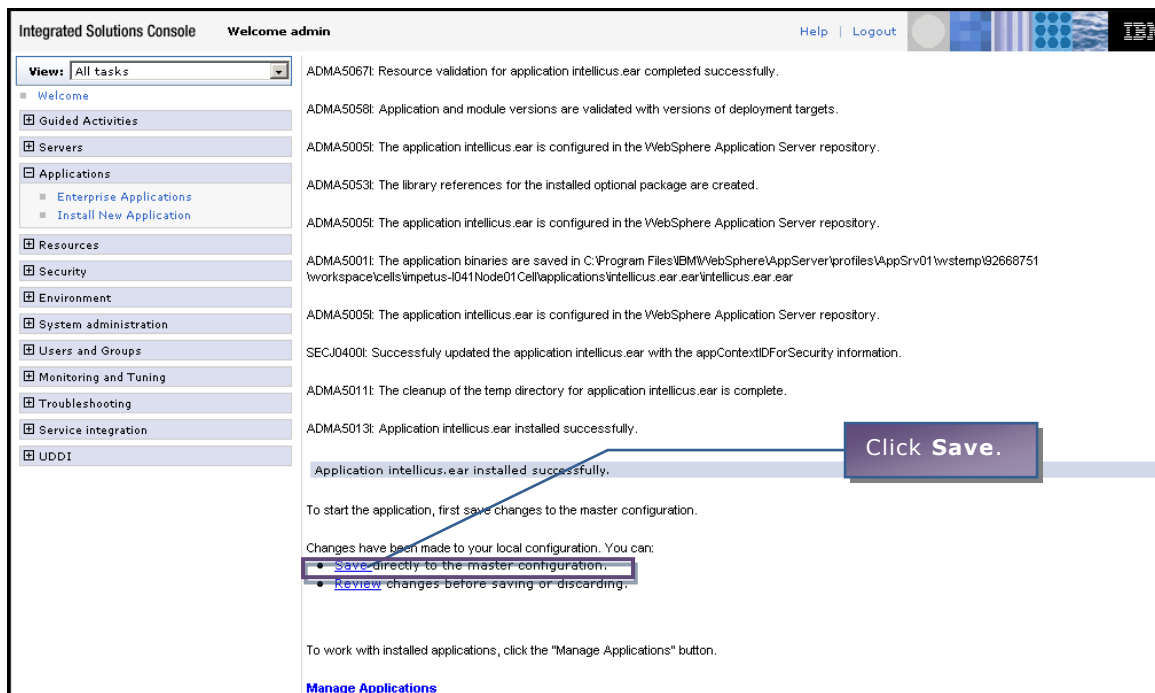


Figure 21

Intellicus portal component is now installed in IBM WebSphere 6.1.

---

## Unzip Client.zip folder

Being a report generation and publishing tool, Intellicus generates different types of files at folder location that is accessible by Web server. Here is the description of those folders:

- **client/config:** Holds all property files that control behavior of Intellicus applications and modules.
- **client/logs:** Creates Intellicus Web client log files in rotation mode.
- **client/reports:** Creates temporary HTML pages of report output when user is navigating back and forth on report pages. For Intellicus to comply with report security, this folder should be secured well.
- **client/temp:** Creates temporary files related to list cache etc.
- **client/lang:** Ships with language library files. You can add or enhance these files according your language needs on Intellicus pages.

Client.zip is available on Report server at path:  
<installation path>/Intellicus/APIs.

Copy this file to the location where you want Intellicus Client folder to reside and Unzip it. This will create following folder structure and the files within:

```
client folder
  config folder
    ReportClient.properties
    adhoc.properties
    HtmlToolBar.properties
    Portal.properties

  temp folder
  logs folder
  reports folder
  lang folder
    en_US.xls
```

After you have unzipped the file, you can make changes related to Report Server IP and Port in ReportClient.properties file.

If changes in ReportClient.properties are made manually, you may need to re-start Web server for bringing the new values to effect. If changes are made using Intellicus Administration UI, then you may not need re-starting of the web server.

## Setting path of ReportClient.properties

Here are the instructions to set path of ReportClient.properties file as JVM argument.

### Step 1. Login in the IBM WebSphere 6.1 console.

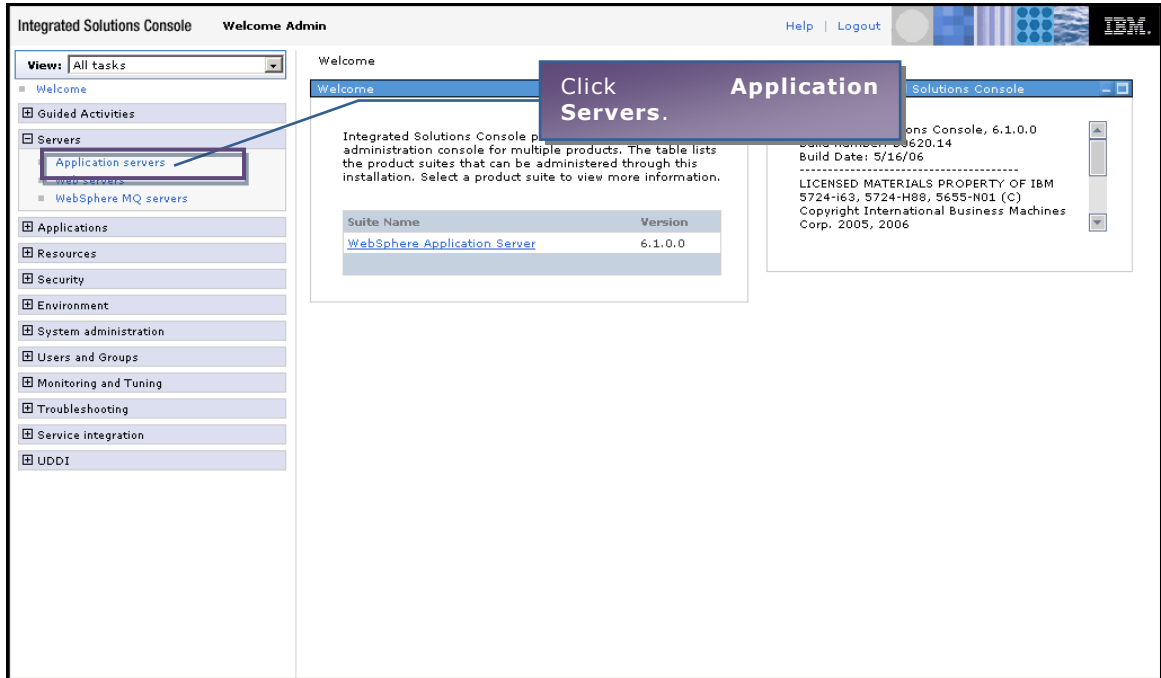


Figure 22

### Step 2. Go to Application Servers.

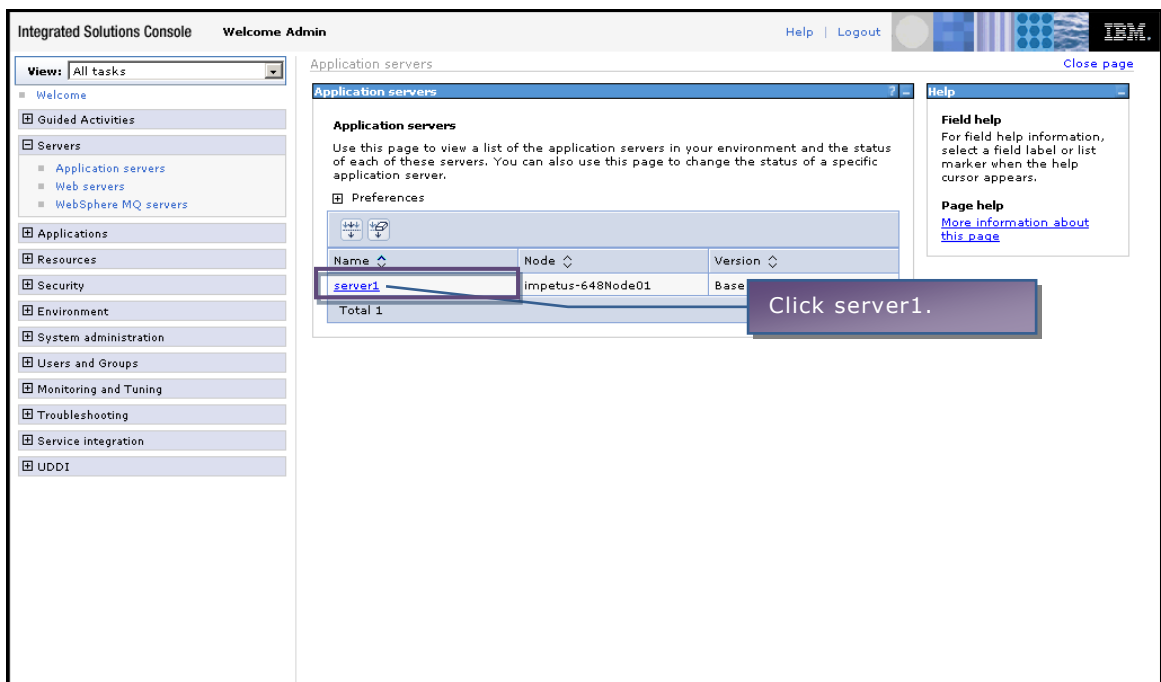


Figure 23

### Step 3. Go to Server Infrastructure > Process definition.

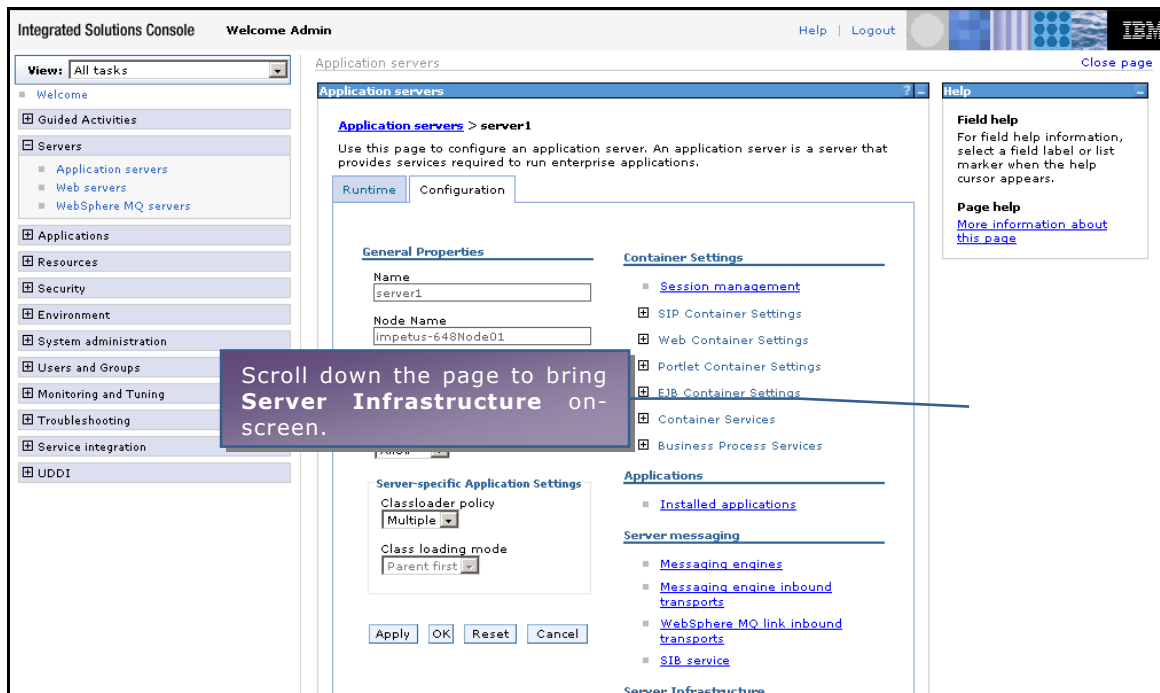


Figure 24

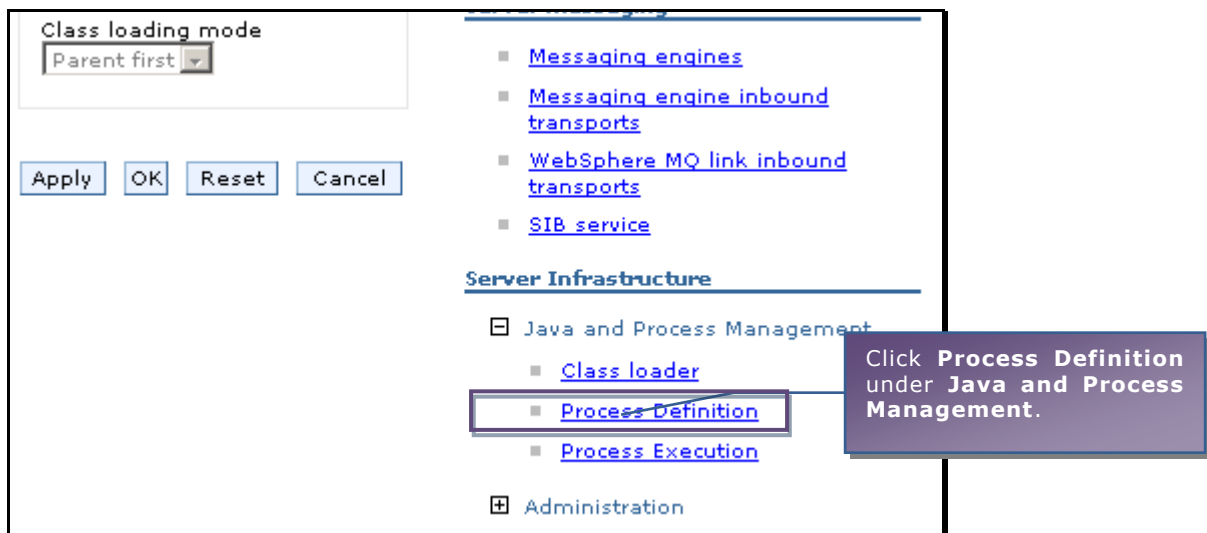


Figure 25

**Process Definition** page appears.

## Step 4. Specify the path.

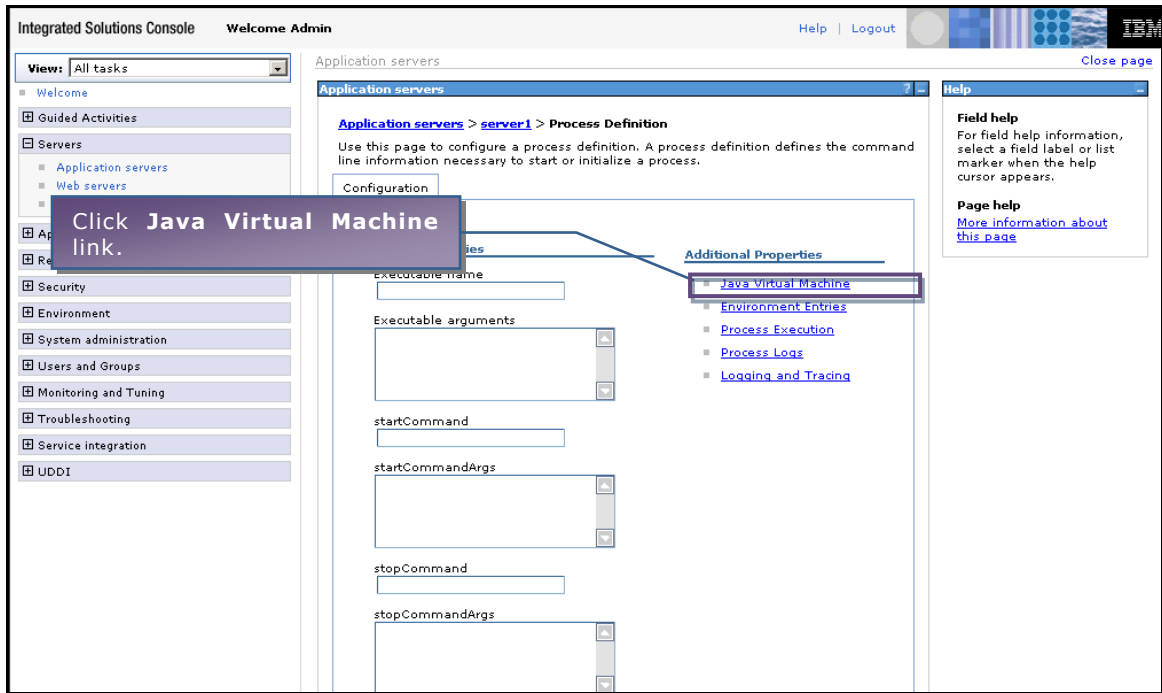


Figure 26

Java Virtual Machine page appears.

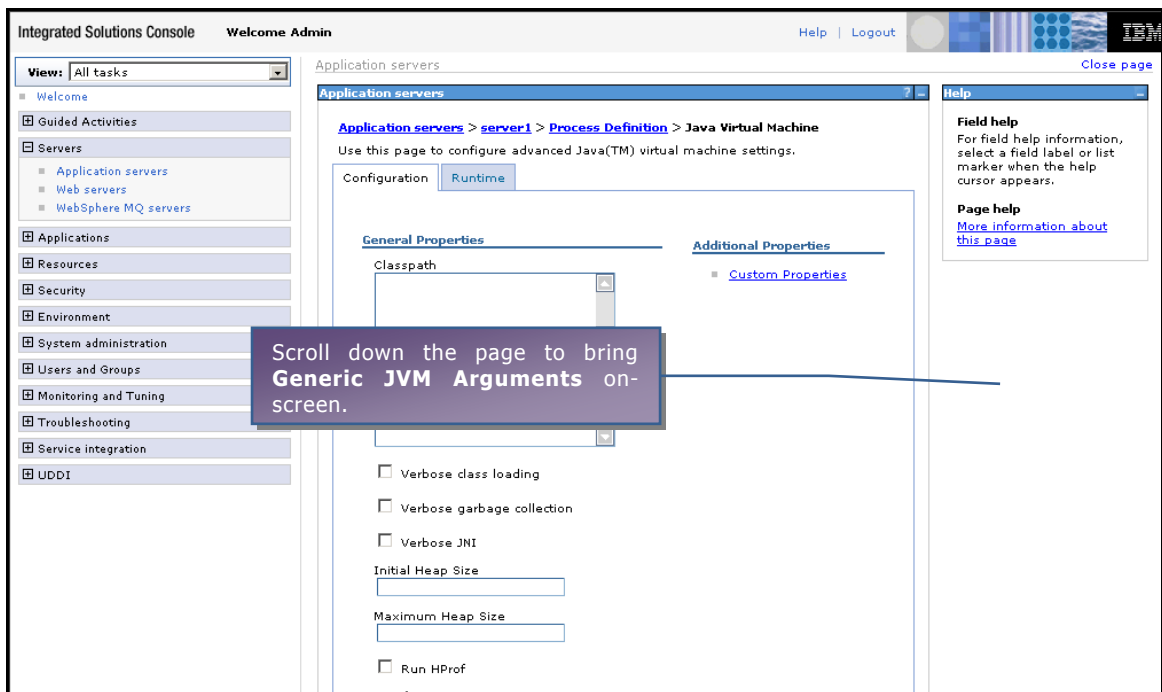


Figure 27

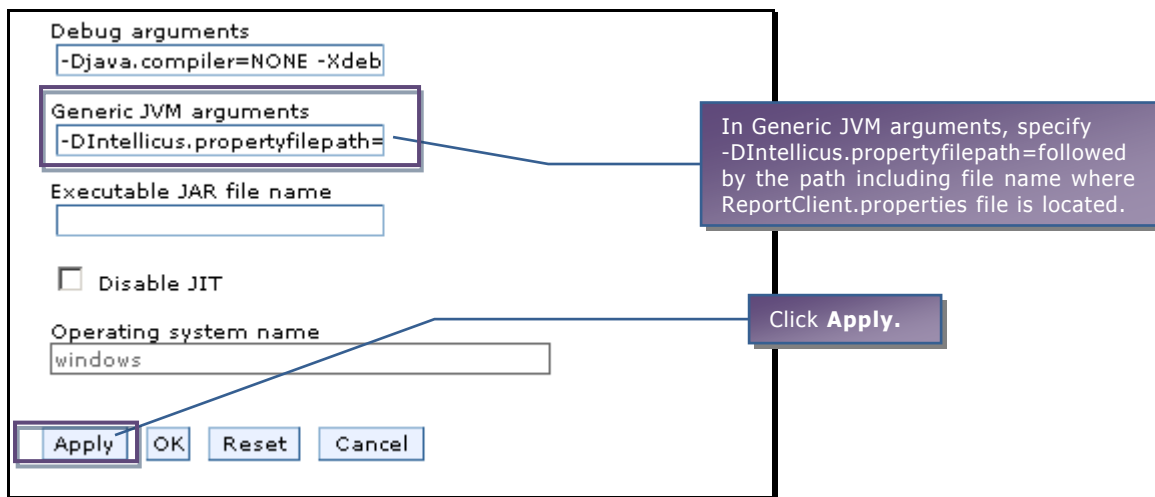


Figure 28

In Generic JVM arguments, specify `-DIntellicus.propertyfilepath=` followed by the path including file name where `ReportClient.properties` file is located. `ReportClient.properties` file should be placed in `<path>/client/config` folder.



**Important:** This path should not contain blank space. For example, `"C:\Program Files\client\config\ReportClient.properties"` is invalid.



**Caution:** If `ReportClient.properties` file is not found at the specified path, you will receive **HTTP Status 500 error** at the time of launching Intellicus in browser.

### Step 5. Save the changes.

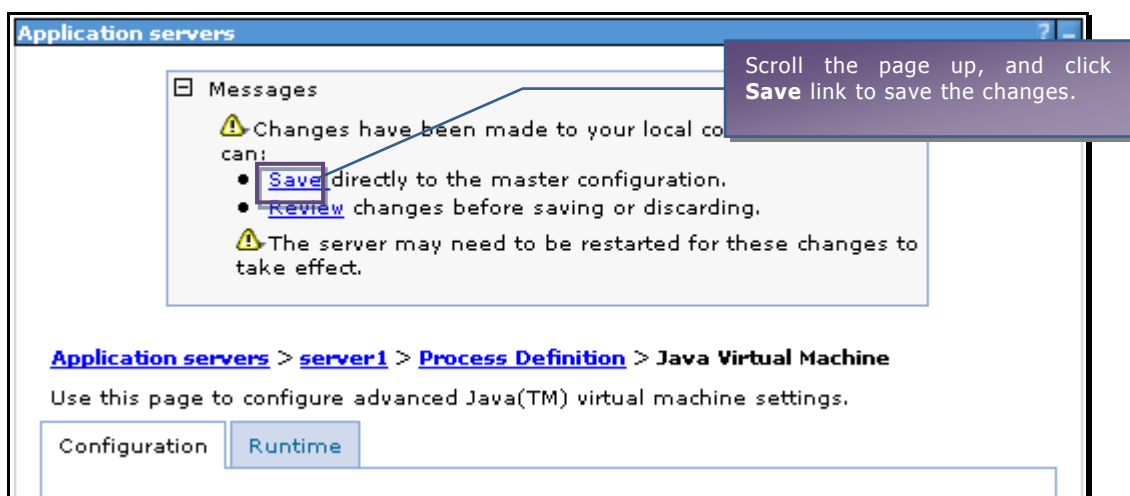


Figure 29

Restart the WebSphere server.

From **Enterprise Applications** page of WebSphere Administration Console, start Intellicus application.

---

## To launch the Intellicus Web-based Reporting Suite

Launch the browser and specify the following URL in its address bar:

```
http:// <IP of the webserver>:9080/intellicus/index.jsp
```



**Important:** Appending index.jsp in the URL is mandatory.

Replace <IP of the Webserver> with the actual IP.

## Logging into Intellicus web-based Reporting Suite

Intellicus needs following information to log user on:

Login Name: Admin

Password: Admin

Organization Name: Intellica

Click **Login** after providing information mentioned above.



